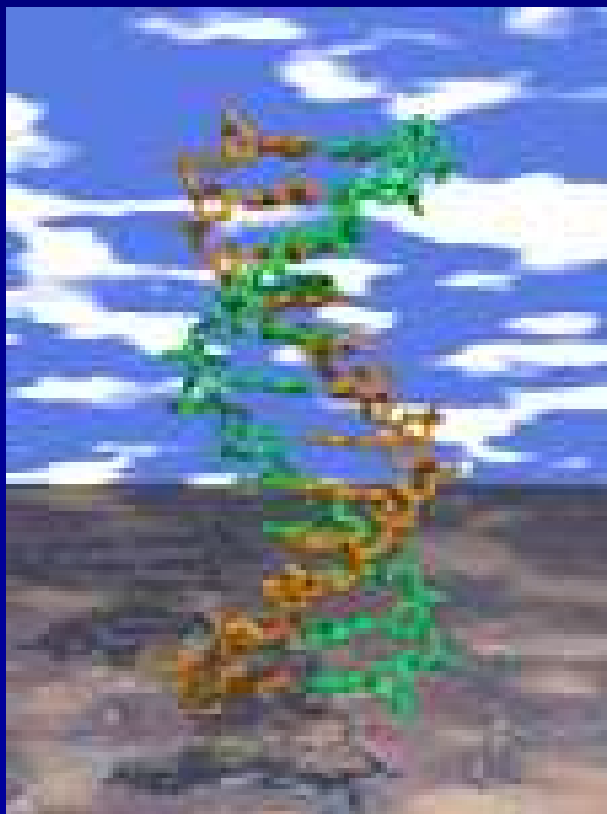
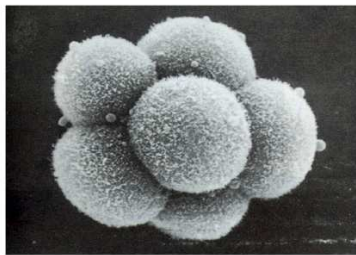
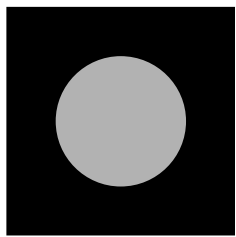
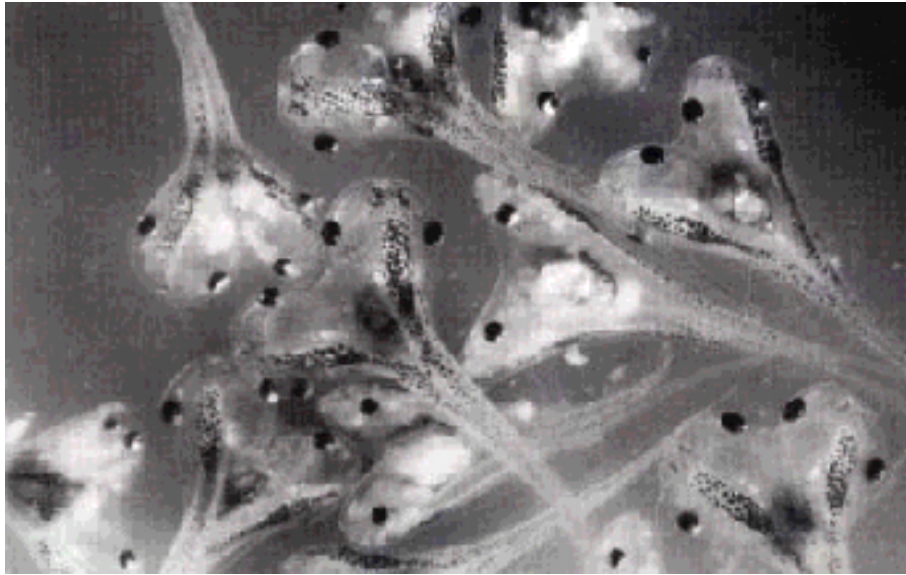


Contrôle Génétique du Développement





***Embryons d'amphibiens "siamois"
obtenus par greffe d'un 2^{ème}
"centre organisateur"***



***Axolotl = grosse larve de salamandre
à maturité sexuelle***

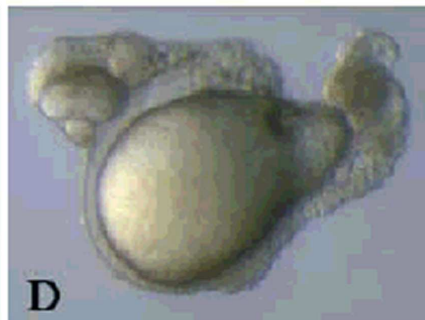
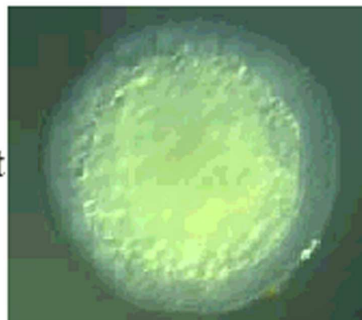
Les mutants Nodal chez le poisson sont sévèrement déficients en mésoderme

wt

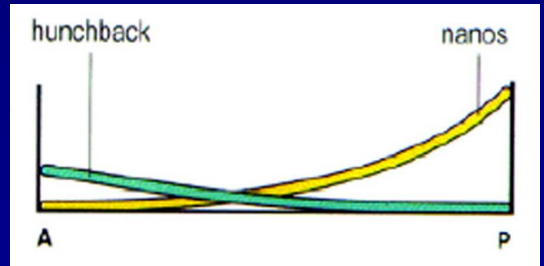
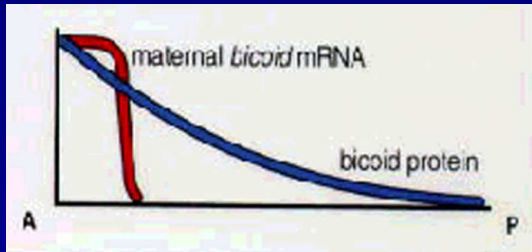
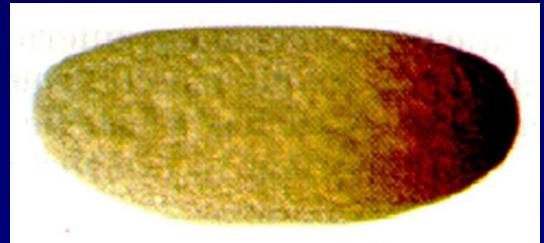


A

Cyclops;squint



D



GENES DE SEGMENTATION DE LA DROSOPHILE

Gènes Gap :

giant	(gt)
tailless	(tll)
huckebein	(hkb)
Kruppel	(Kr)
knirps	(kni)
hunchback	(hb)

Gènes pair-rule primaires :

hairy	(h)
even-skipped	(eve)
runt	(run)

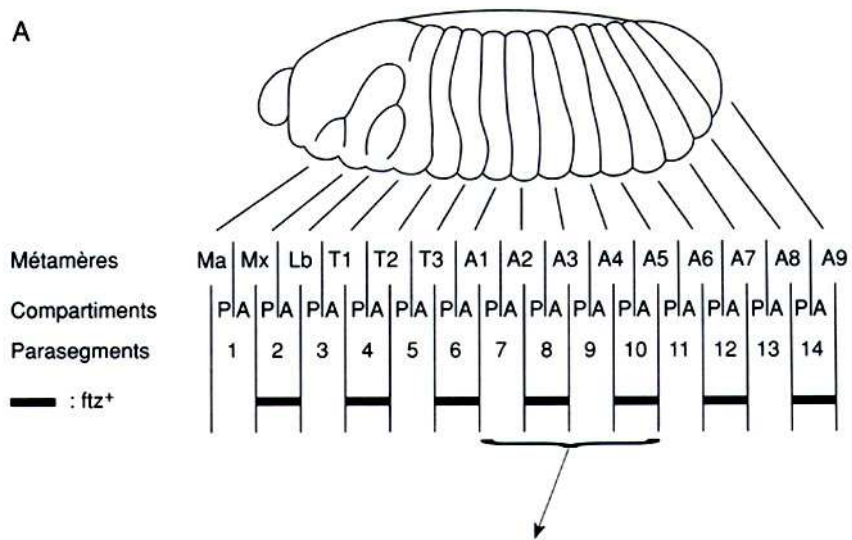
Gènes pair-rule secondaires :

fushi-tarazu	(ftz)
odd-paired	(opa)
odd-skipped	(odd)
sloppy-paired	(slp)
paired	(prd)

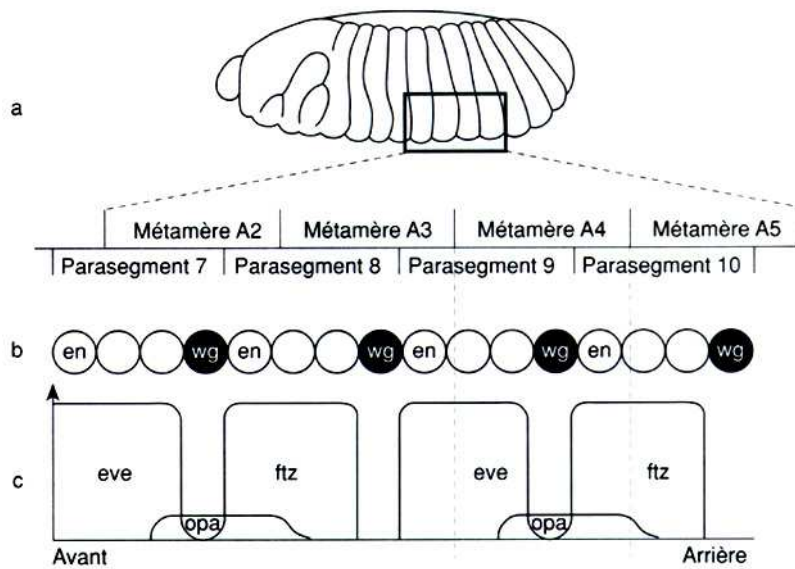
Gènes de polarité segmentaire :

engrailed	(en)
wingless	(wg)
cubitus interruptus	(ci)
hedgehog	(hh)
fused	(fu)
armandillo	(arm)
patched	(ptc)
gooseberry	(gsb)

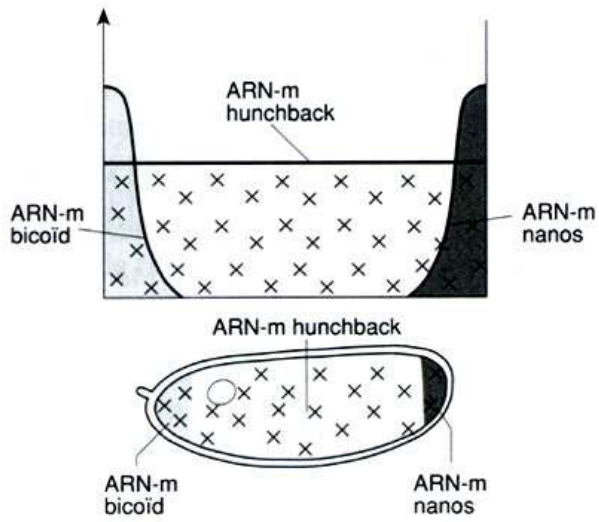
A



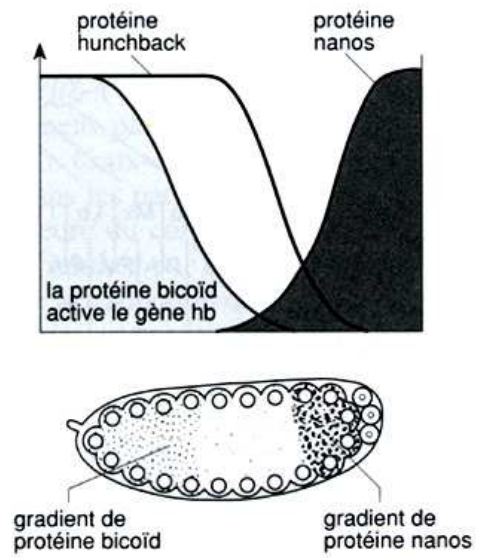
B



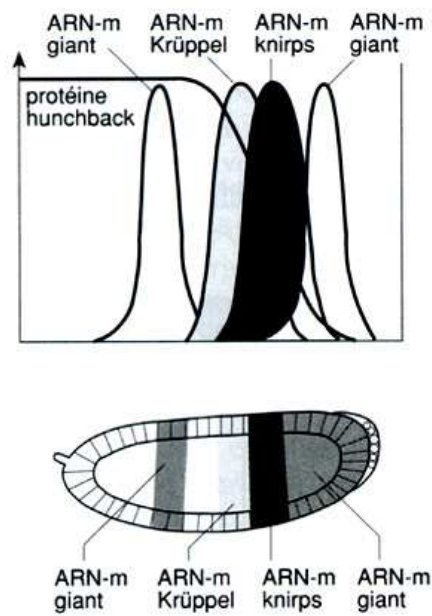
A

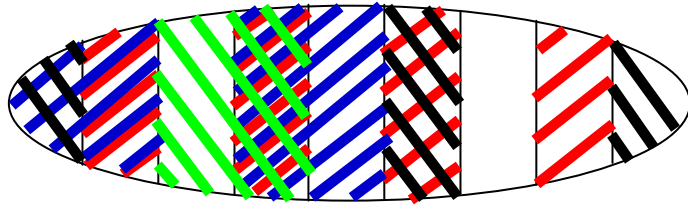
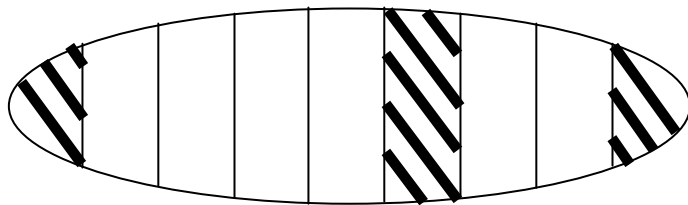
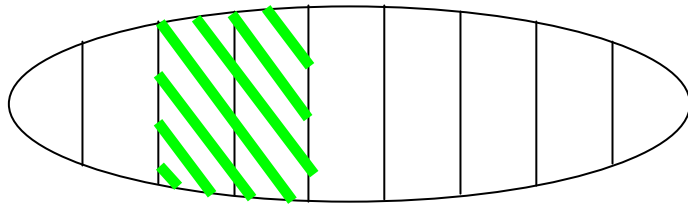
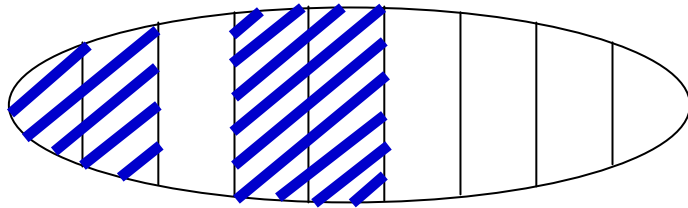
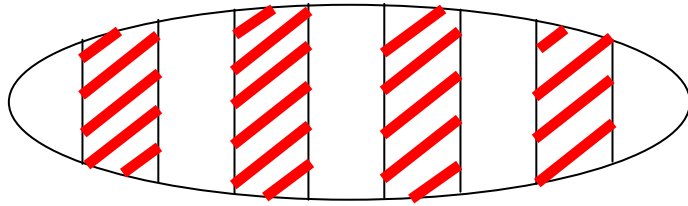


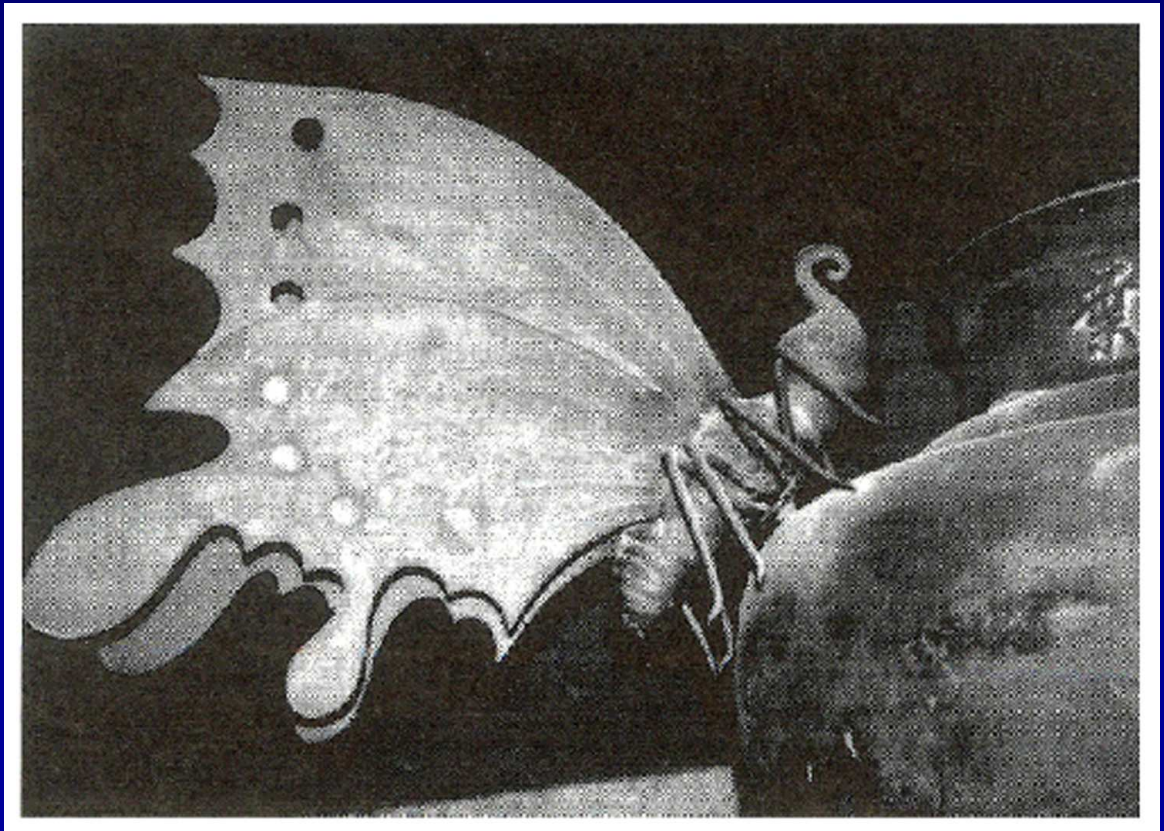
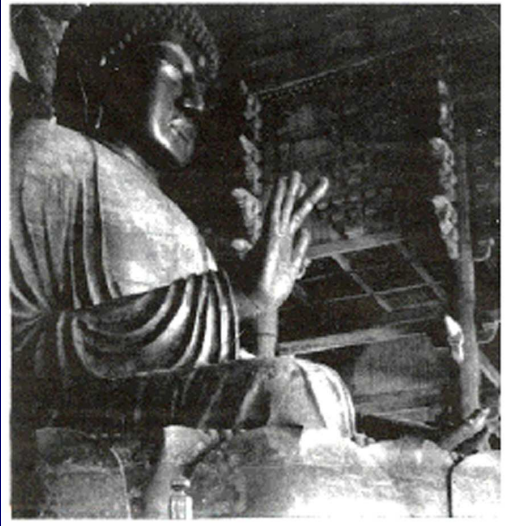
B



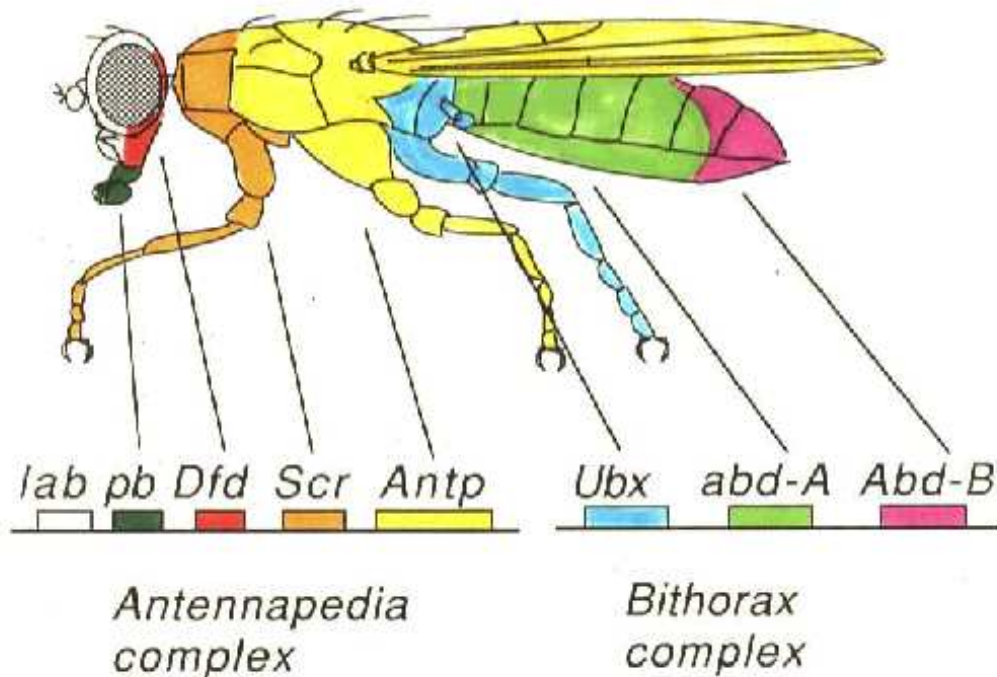
C







Drosophila homeotic (Hox) genes

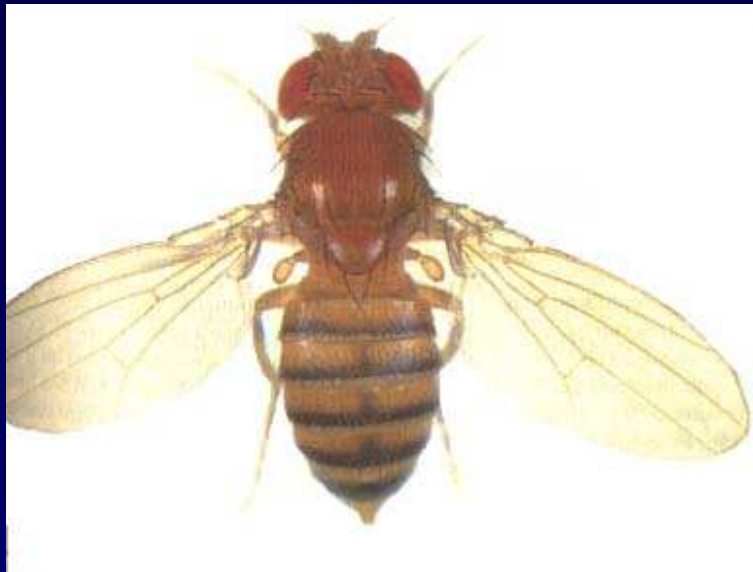


Légendes :

- *lab*=labial, *pb*=proboscidea,
Dfd=deformed, *Scr*=Sex combs reduced,
Antp=Antennapedia

- *Ubx*=Ultrabithorax,
abd-A=abdominal-A, *Abd-B*=Abdominal-B

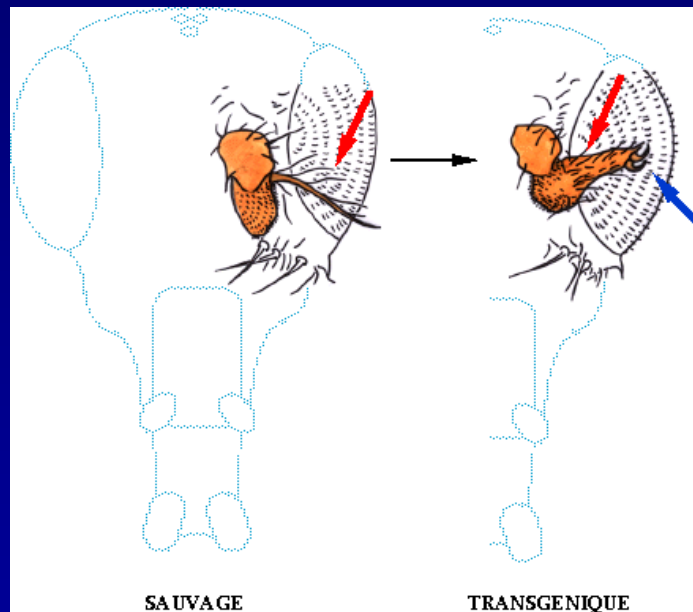
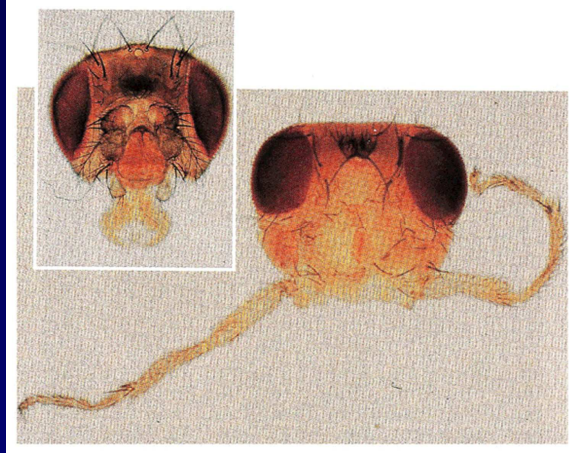




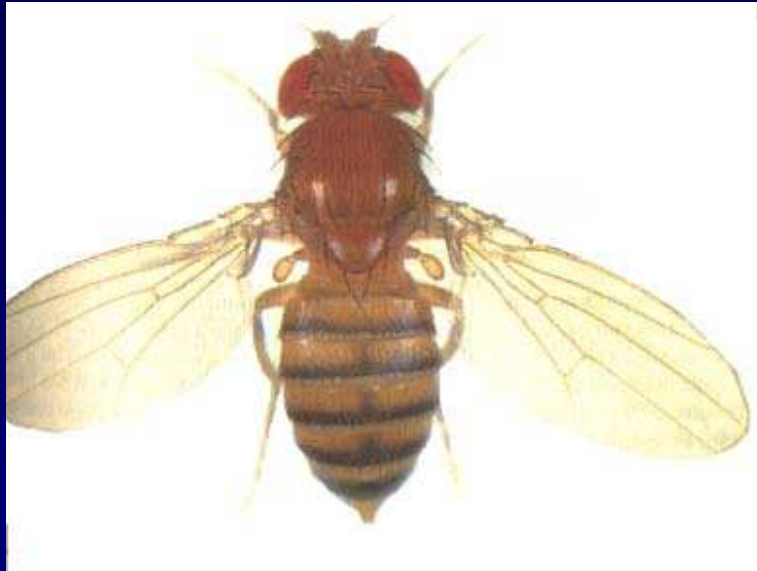
MOUCHE NORMALE

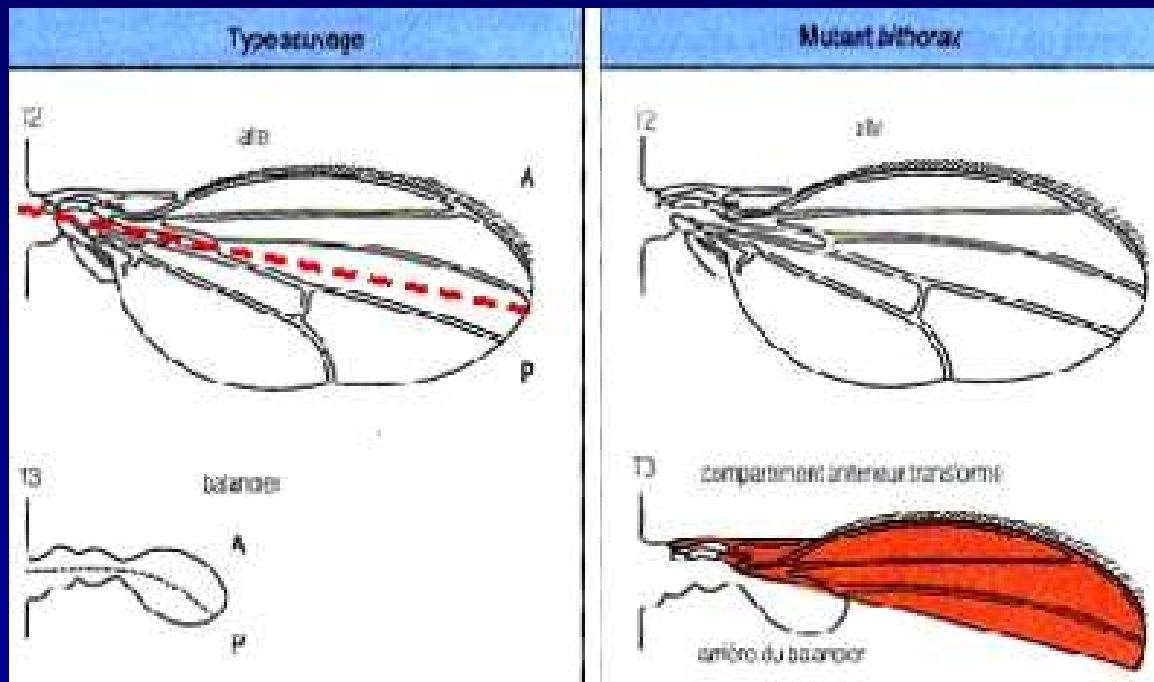
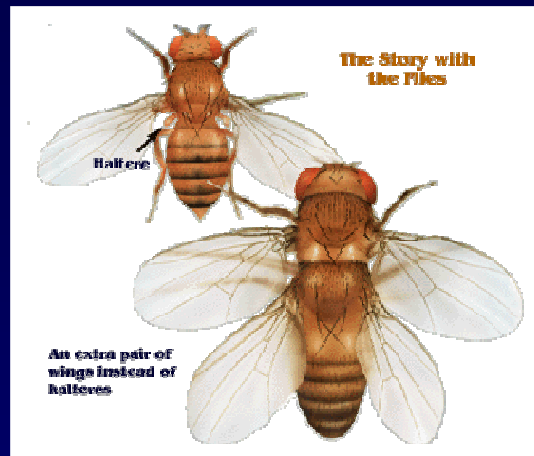


MOUCHE MUTANTE

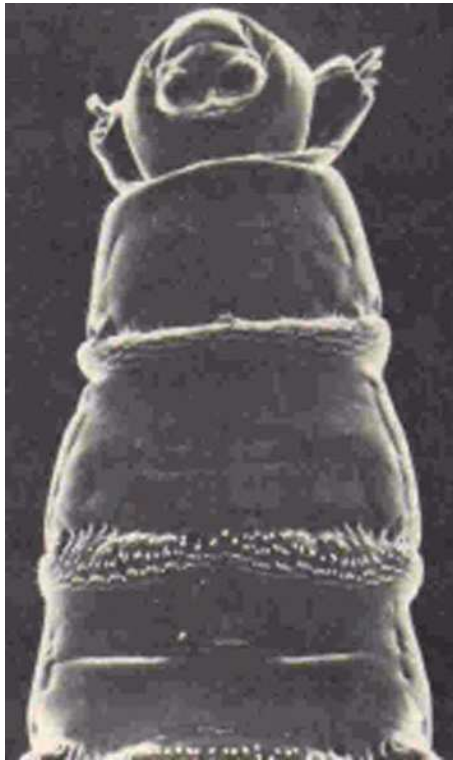


“Antennapedia”

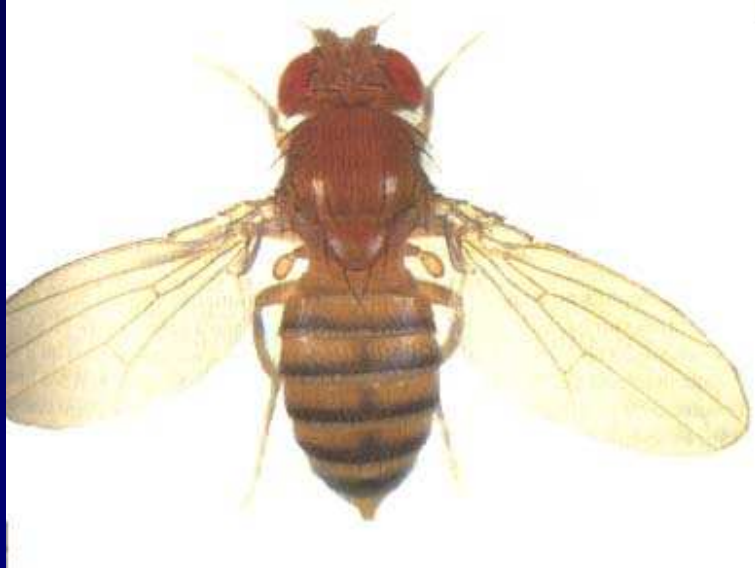




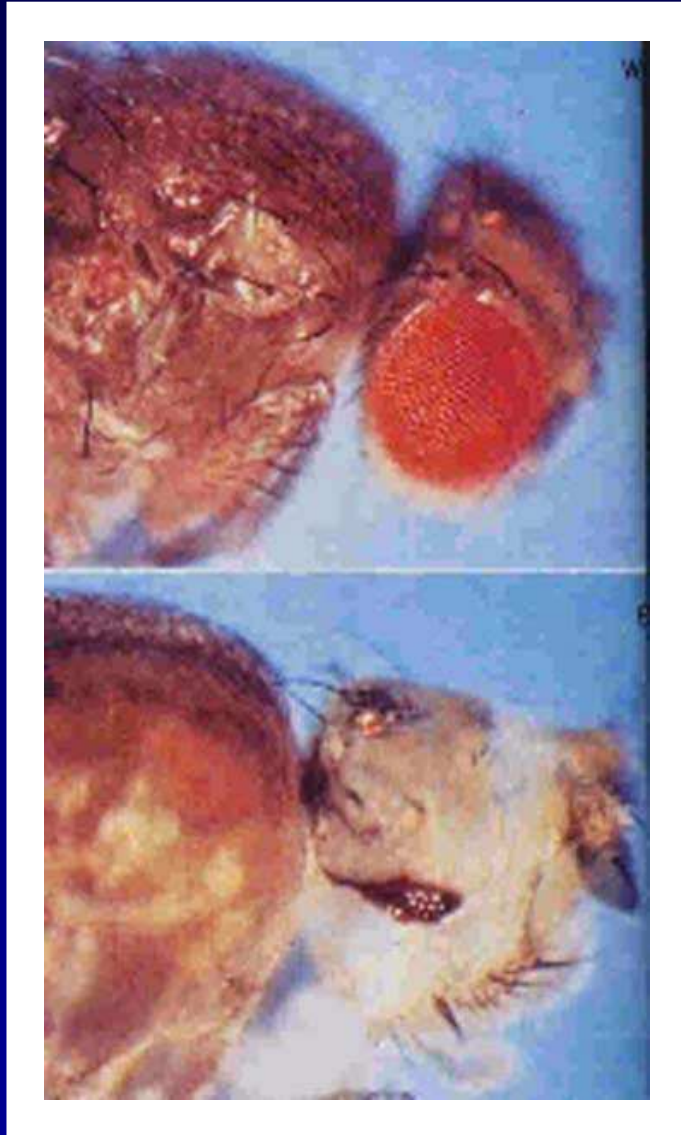
***Mutations dans le complexe bithorax,
(partie antérieure
seulement="bithorax",
totalement="postbithorax")***



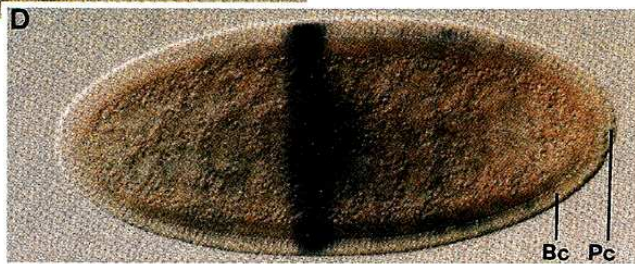
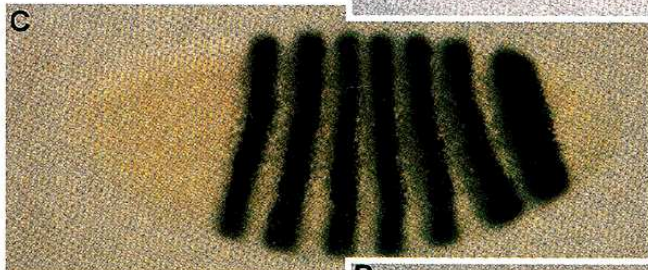
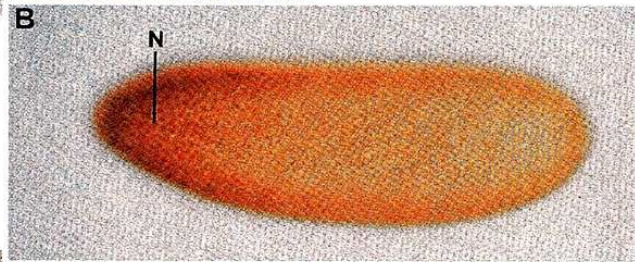
“Ultrabithorax”



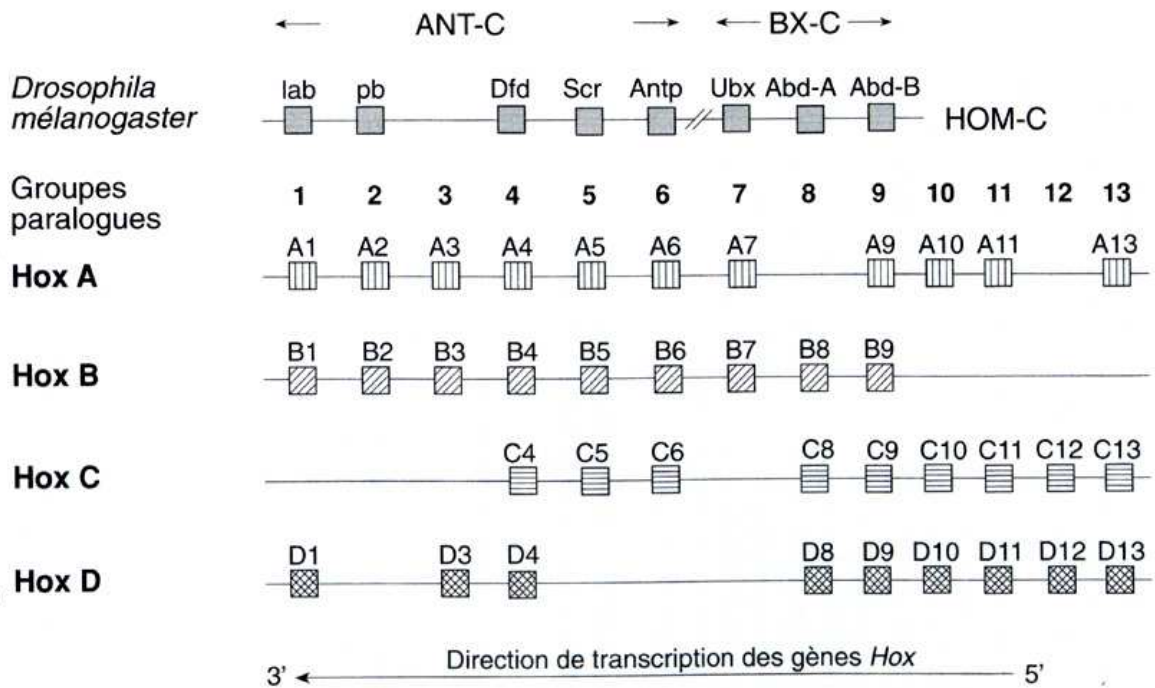
Mutation "bithoraxoide"



“Eyeless”

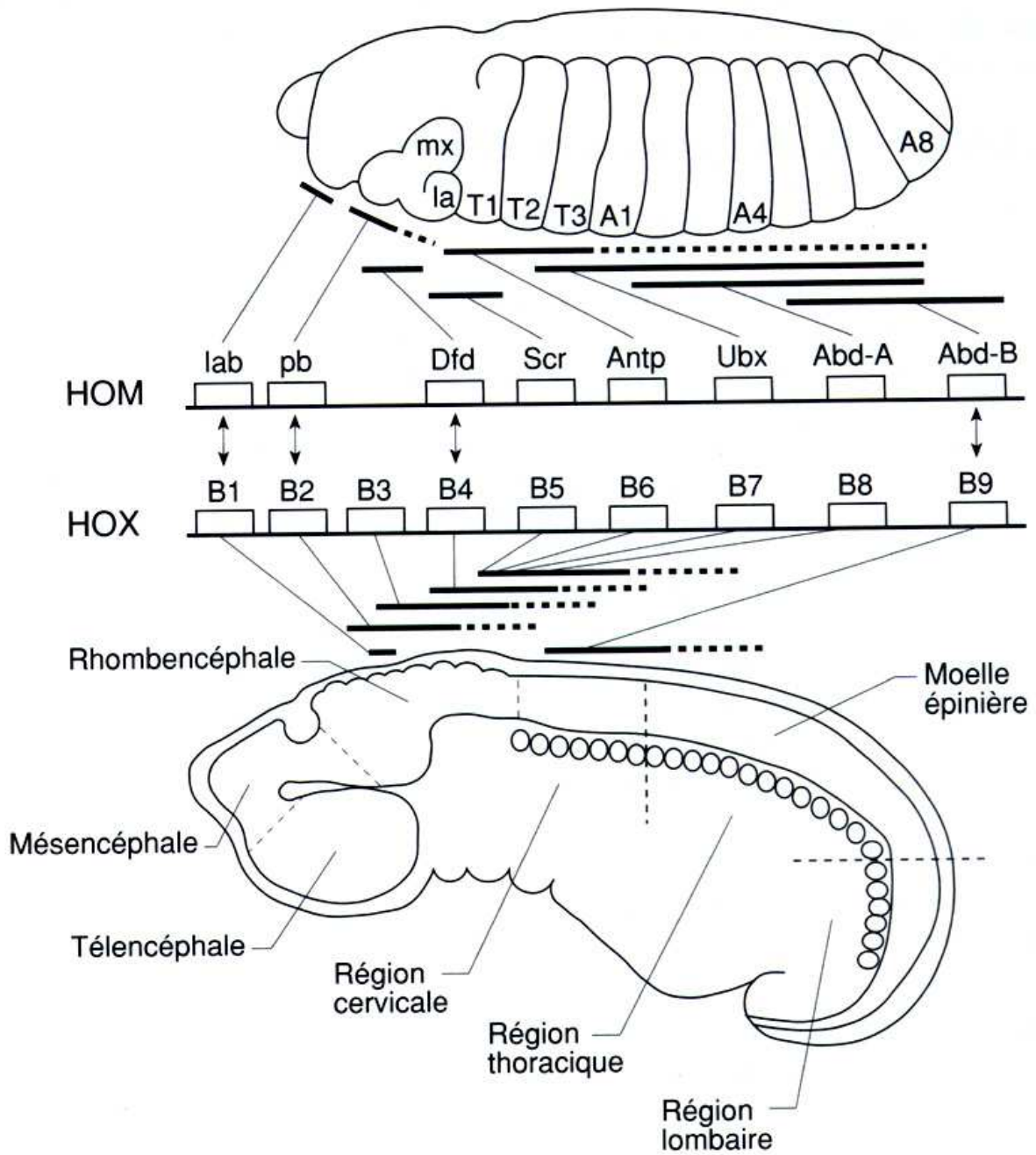


M
A
M
M
I
F
È
R
E
S

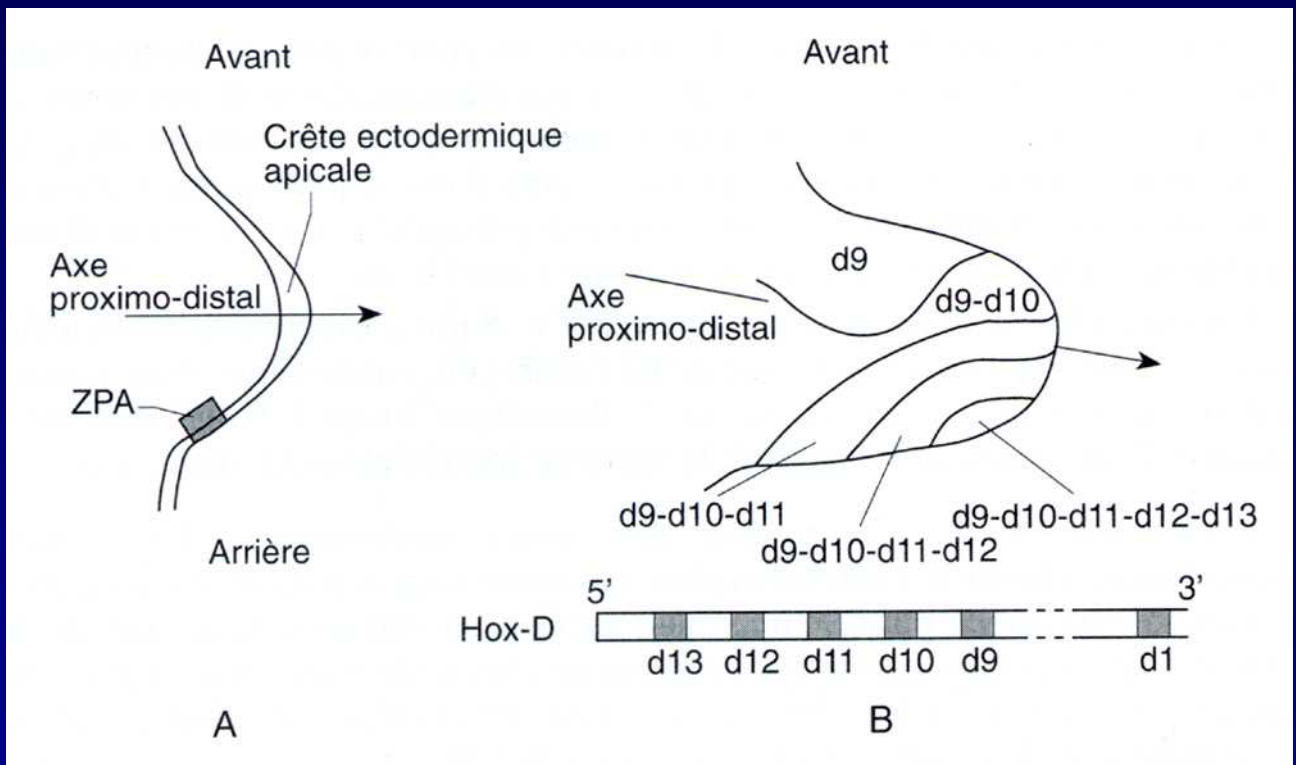


- Gènes précoces
- Gènes exprimés vers la partie antérieure de l'embryon
- Réponse forte à l'acide rétinoïque

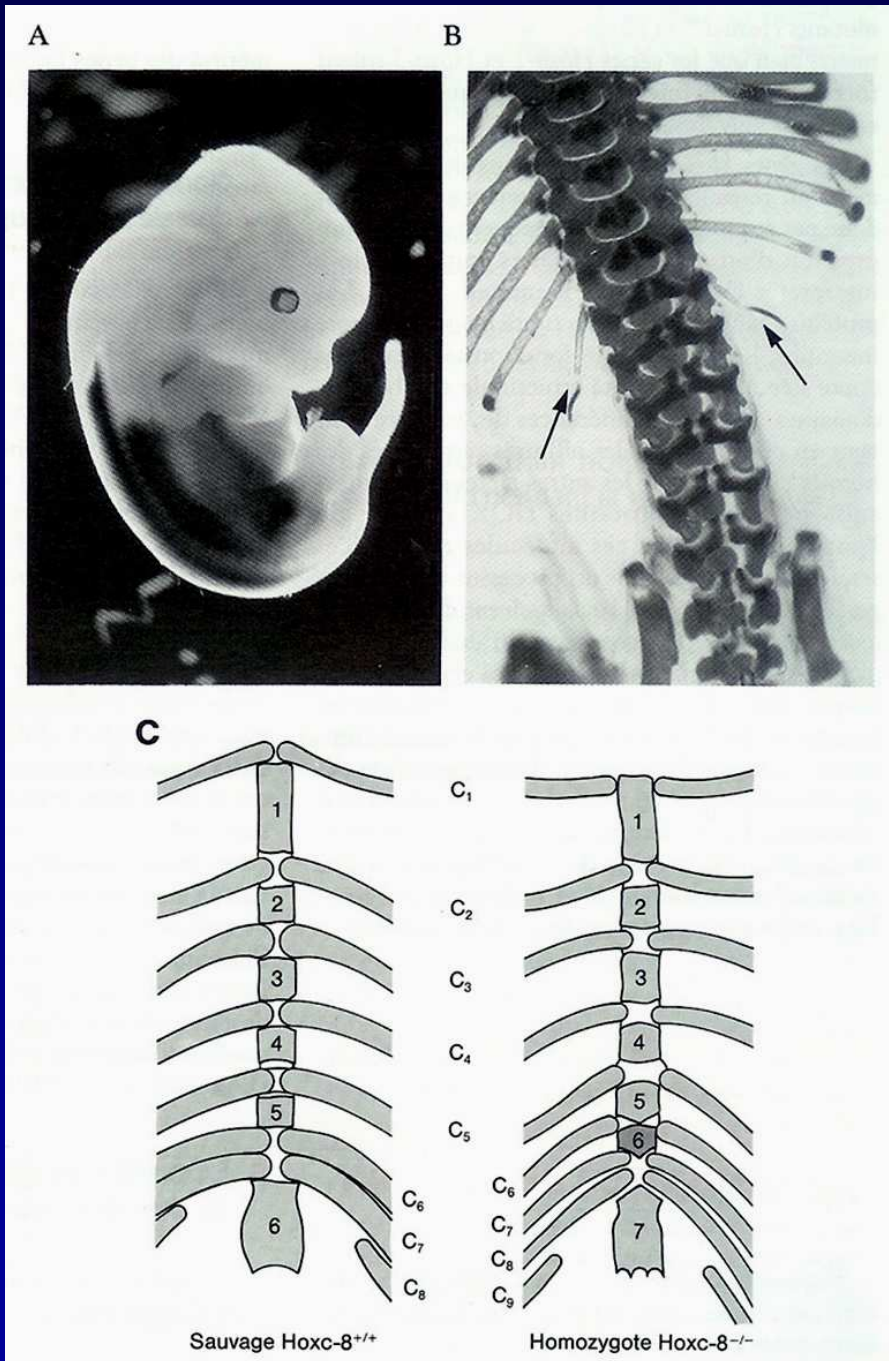
- Gènes tardifs
- Gènes exprimés vers la partie postérieure de l'embryon
- Réponse faible à l'acide rétinoïque



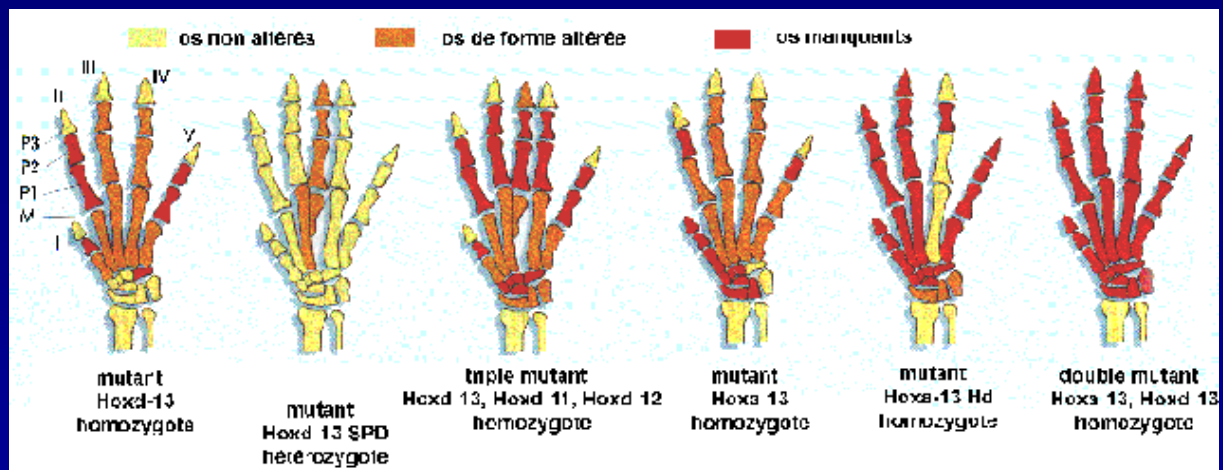
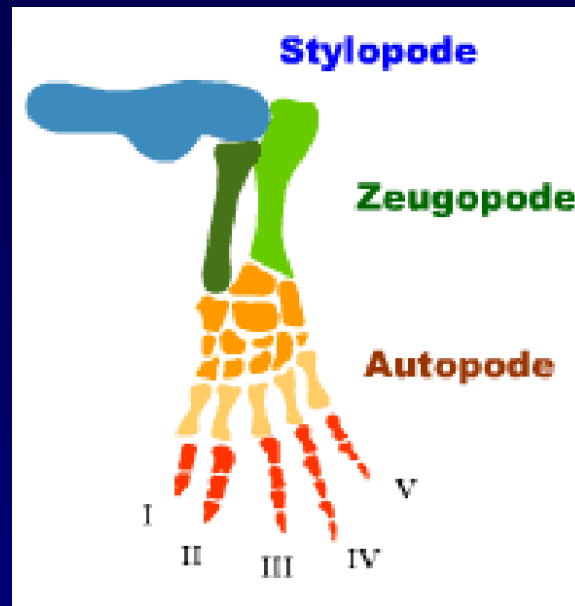
SOURIS



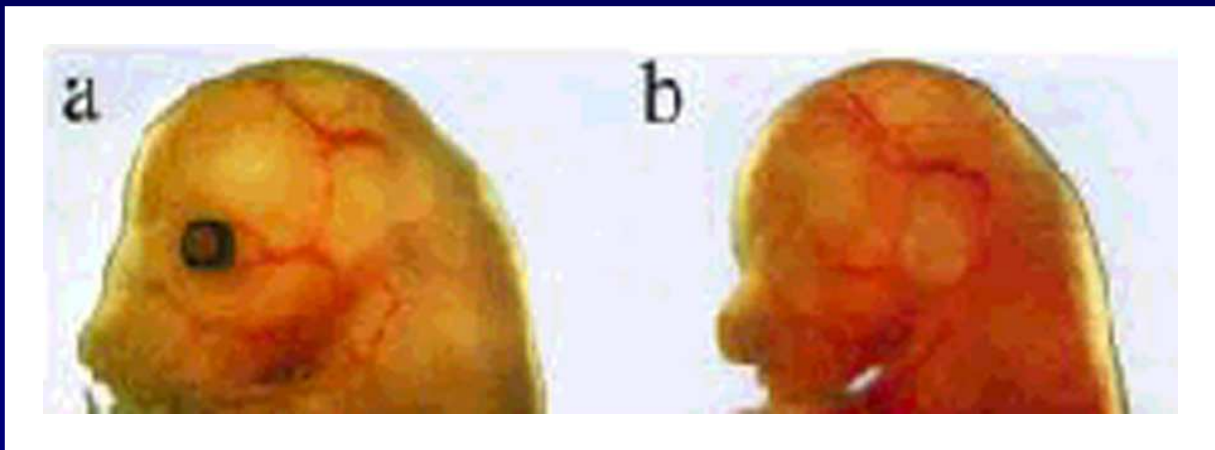
Bourgeon de patte d'embryon de poulet



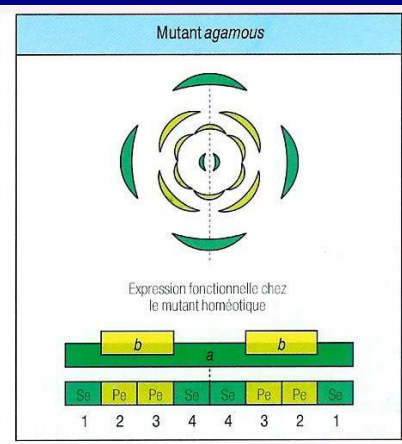
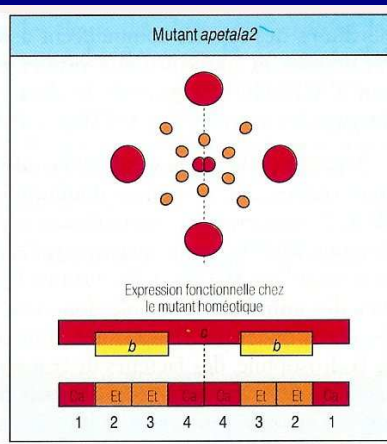
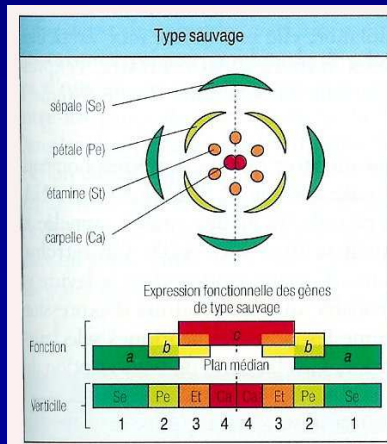
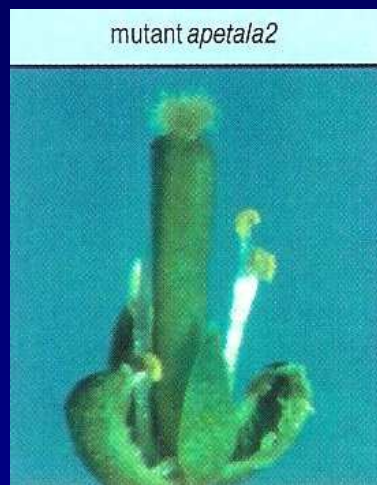
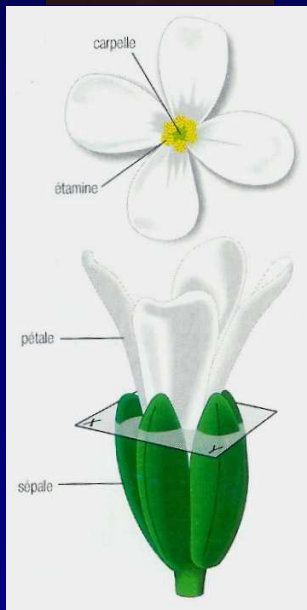
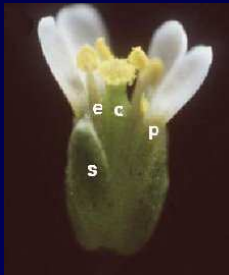
Inactivation de Hox



***Mutations de gène(s) sélecteur(s)
homéotique(s) Hox***



Gène Pax6 (équivalent de eyeless)



Mutations de gènes homéotiques chez *Arabidopsis*

