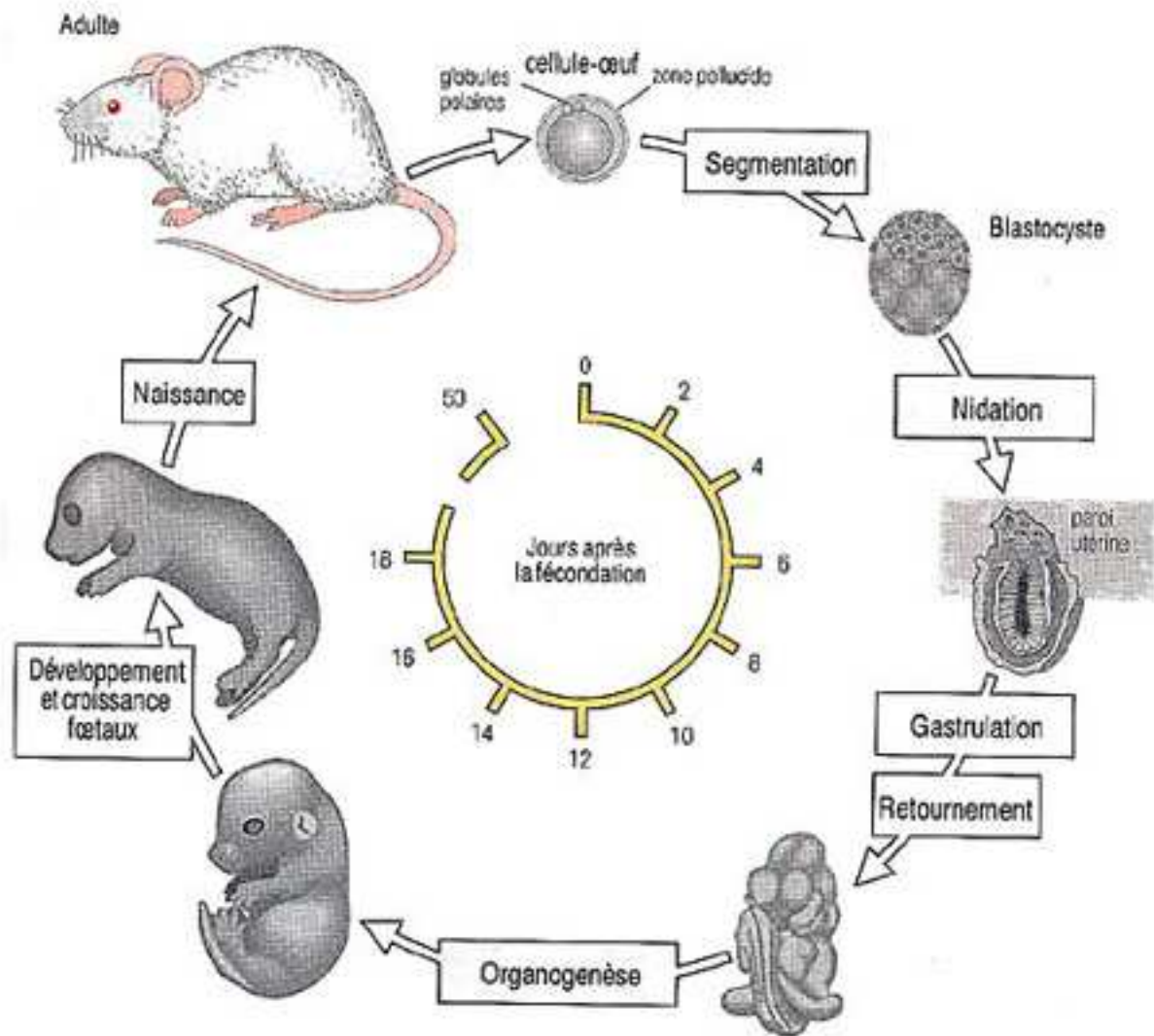
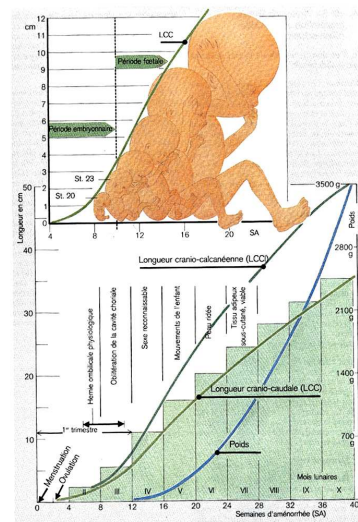
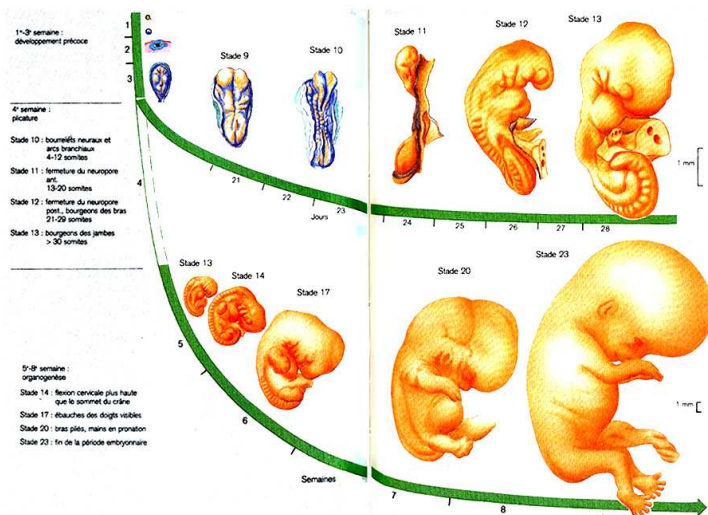
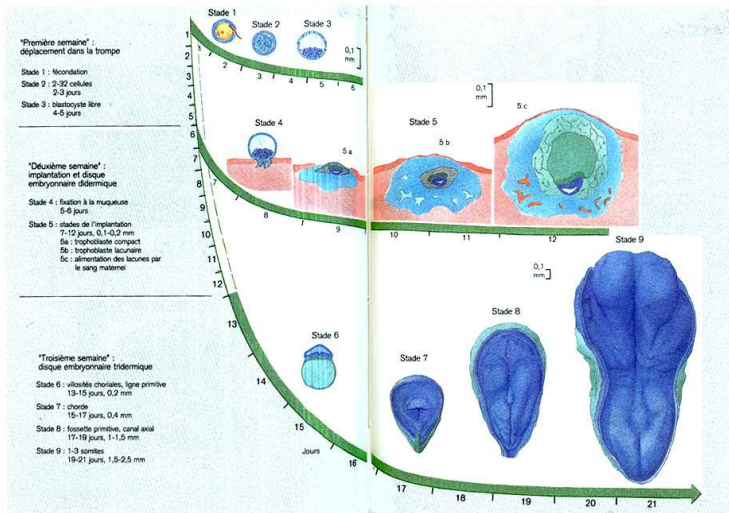


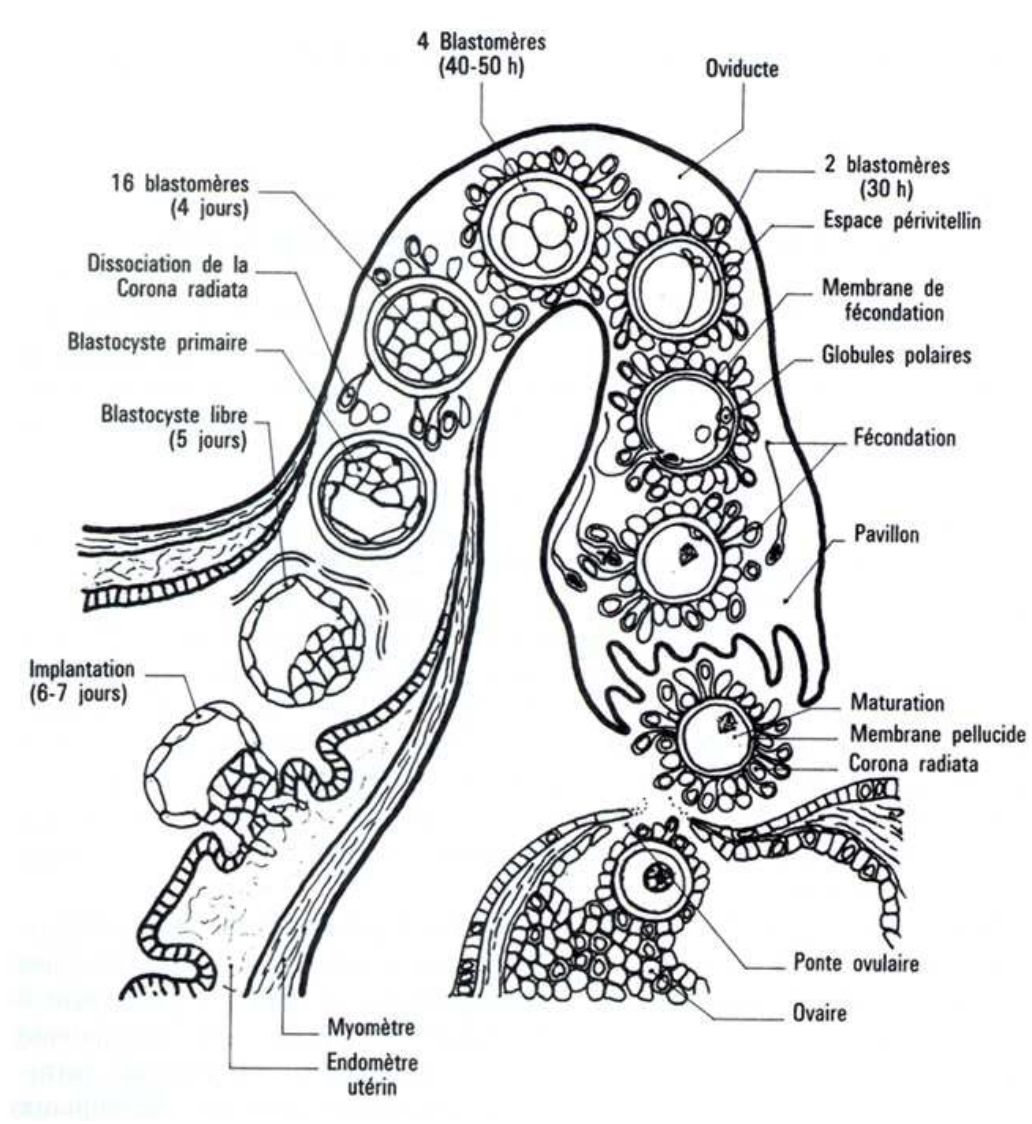


LES MAMMIFERES

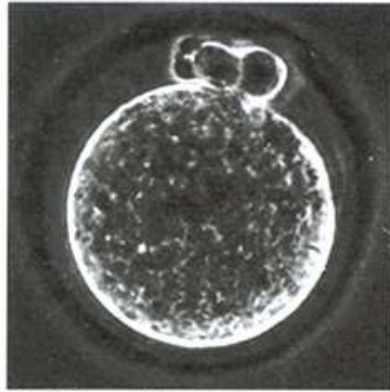




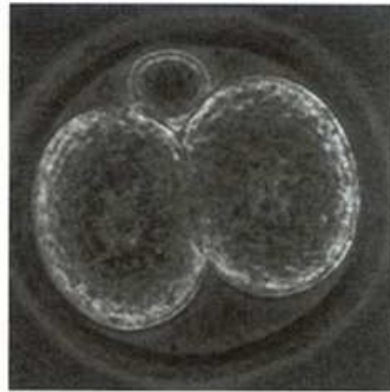




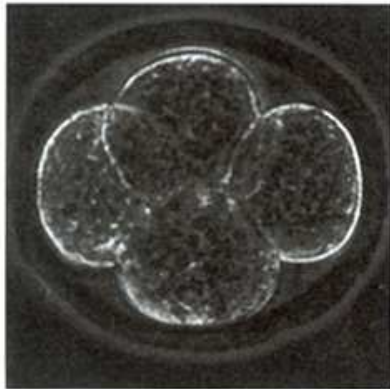
Premières étapes de la segmentation de l'embryon *Mus musculus* (x60)



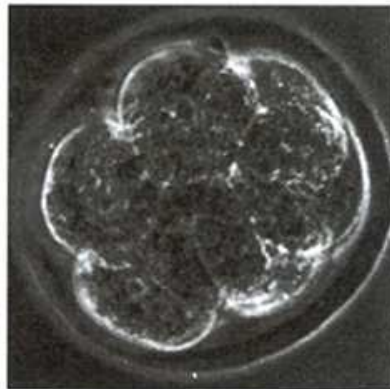
œuf fécondé



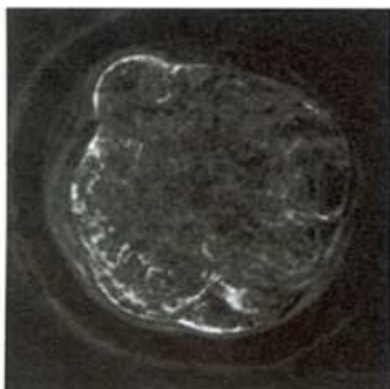
Stade 2 cellules



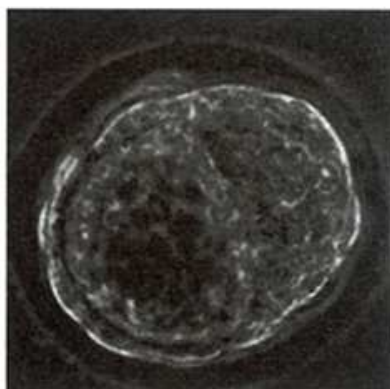
Stade 4 cellules



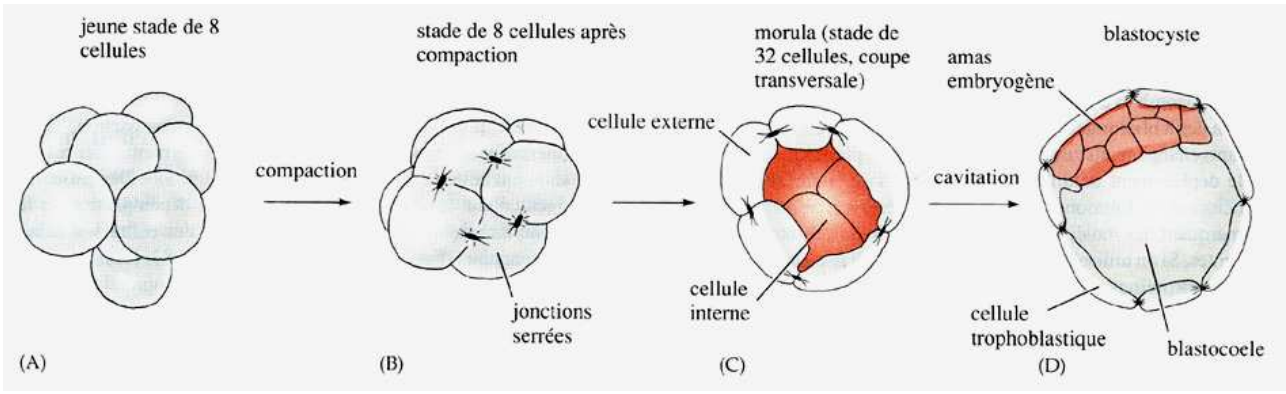
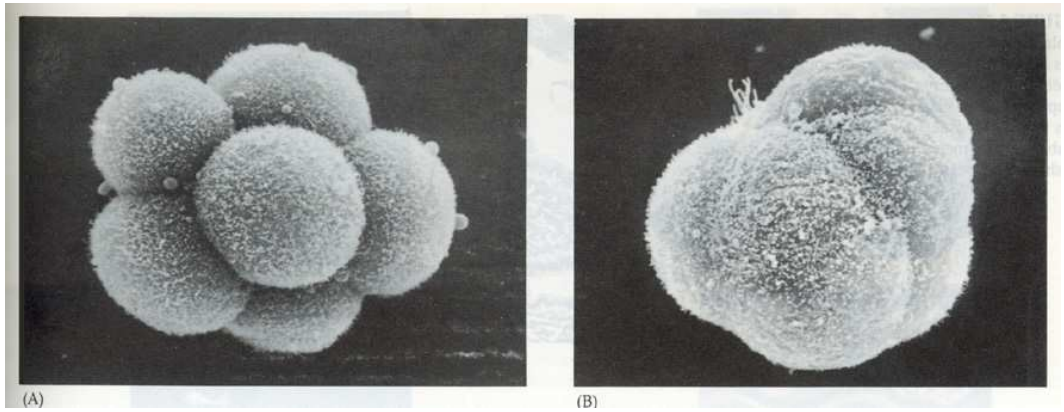
Stade 8 cellules



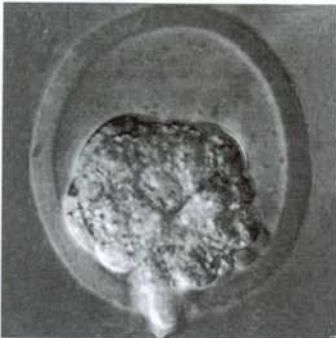
Stade 8 cellules après
"compaction"



Blastocyste



Implantation du blastocyste chez le rat



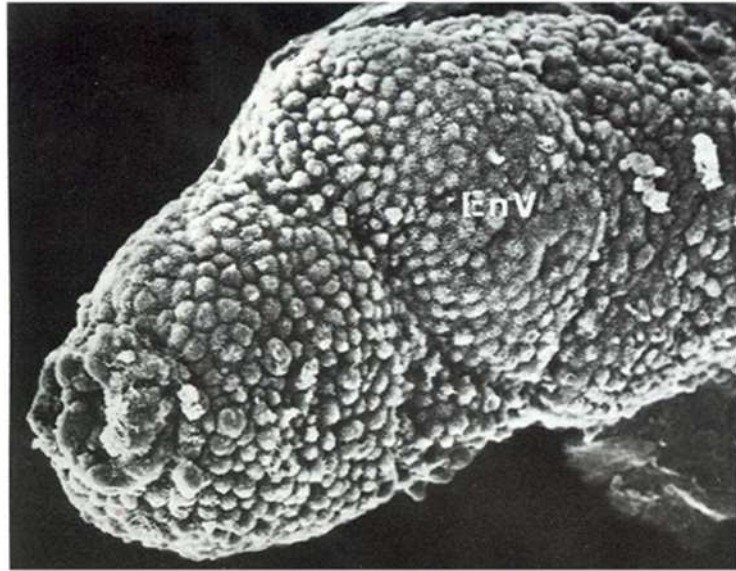
a) Rupture de la zone pellucide et sortie du blastocyste



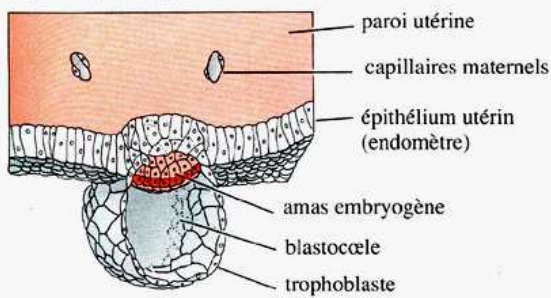
b) Pré-implantation à 5 jours (x30)
(d'après Hebel and Stromberg, 1986)



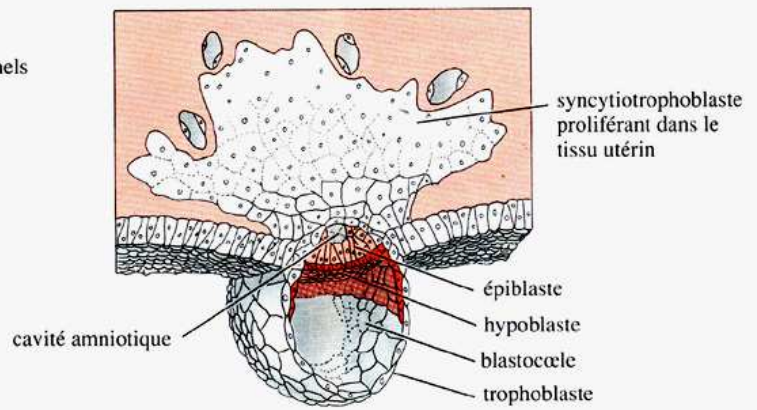
c) Embryon à 8 jours (x25)



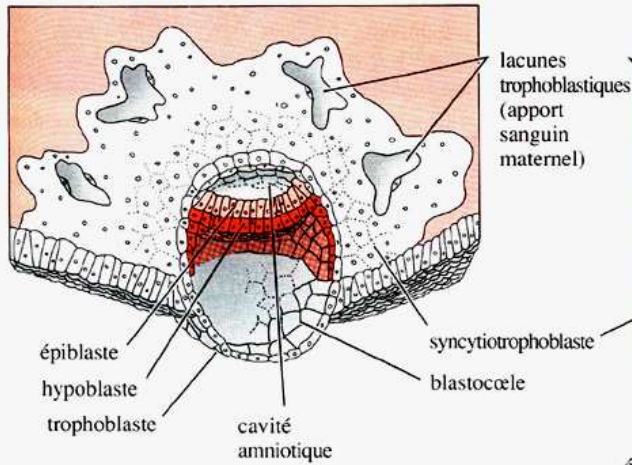
(A) blastocyste, 7 jours



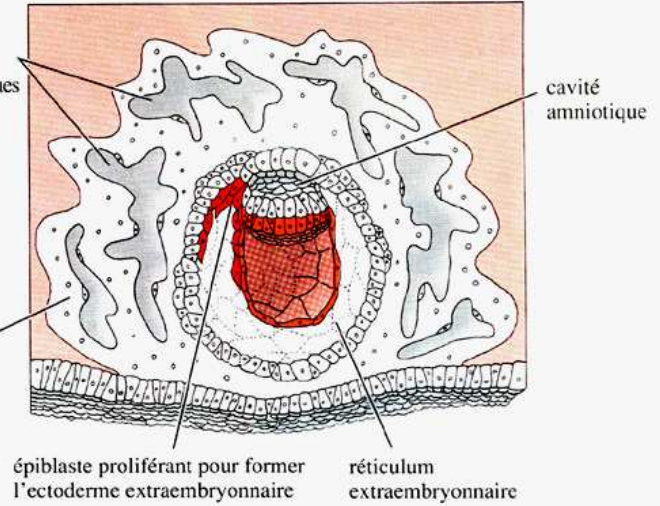
(B) 8 jours

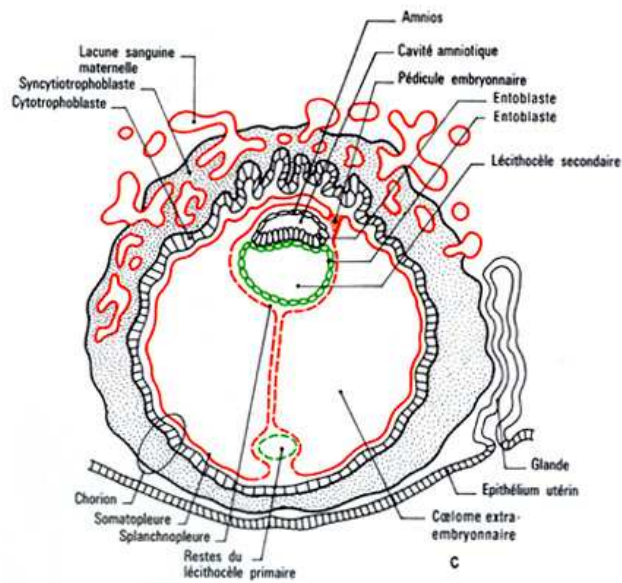
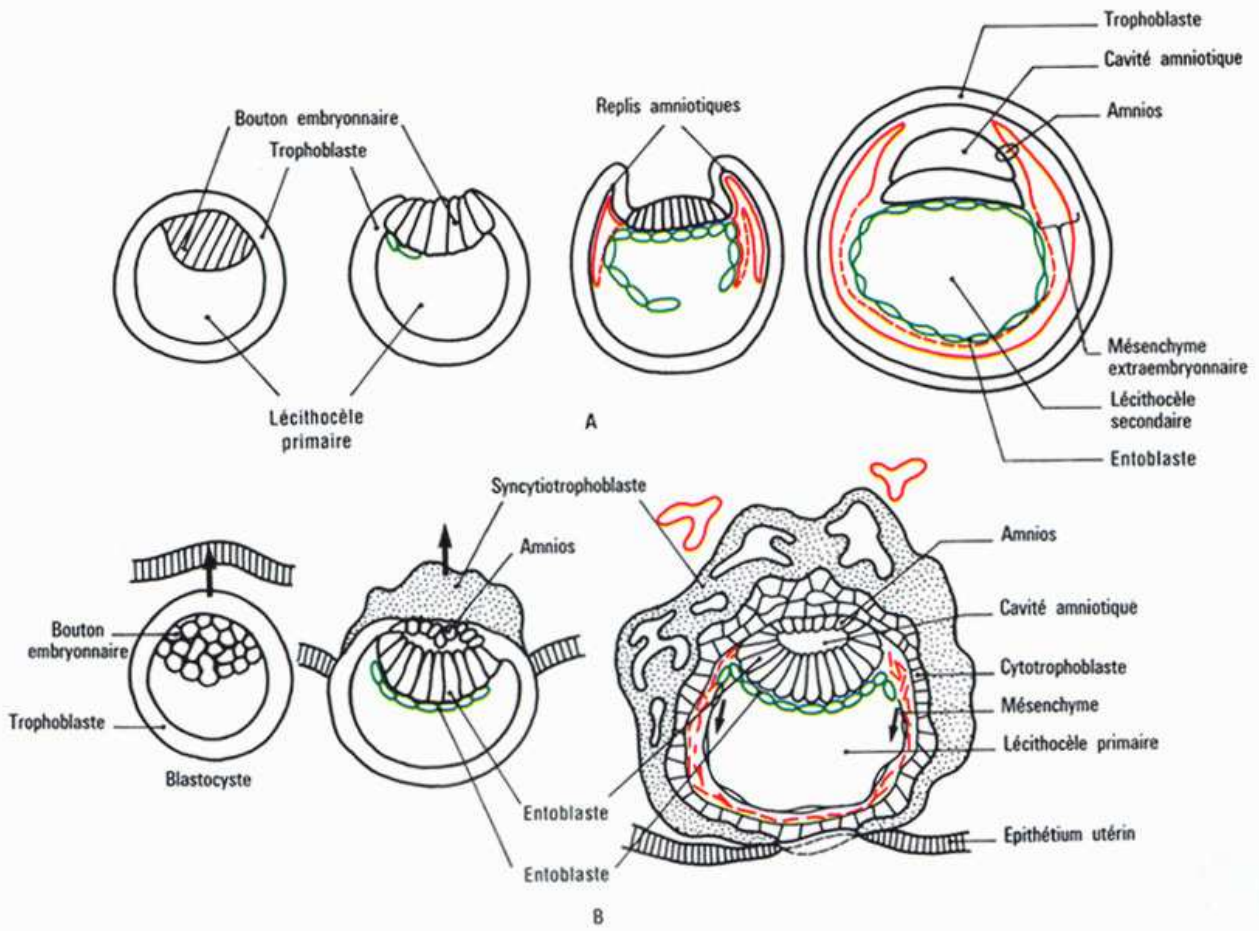


(C) 9 jours

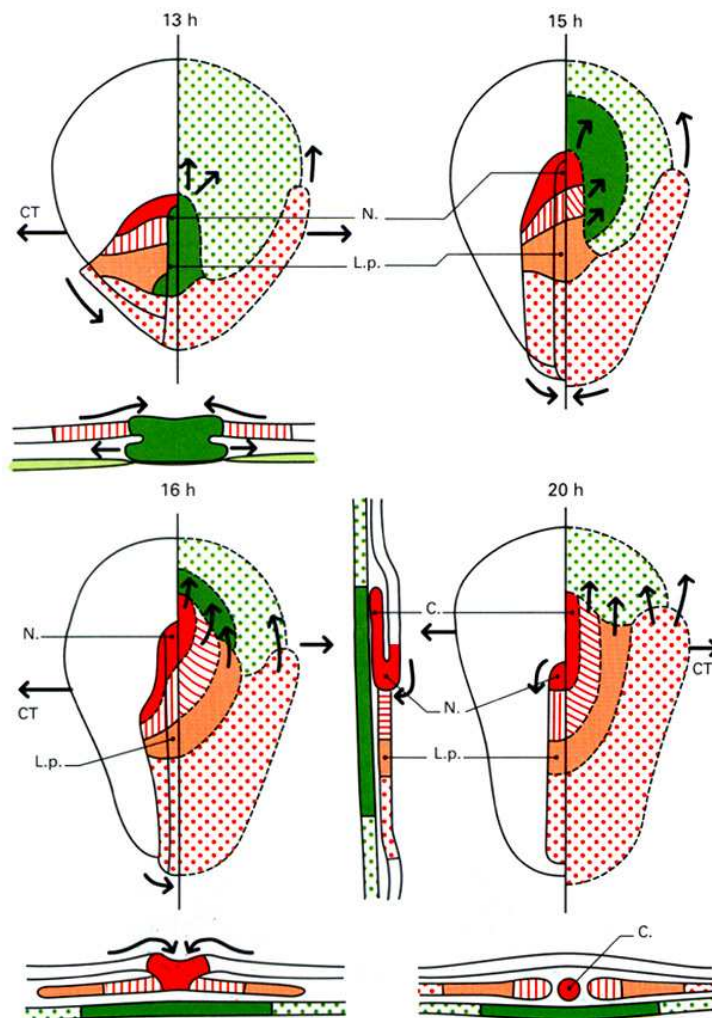
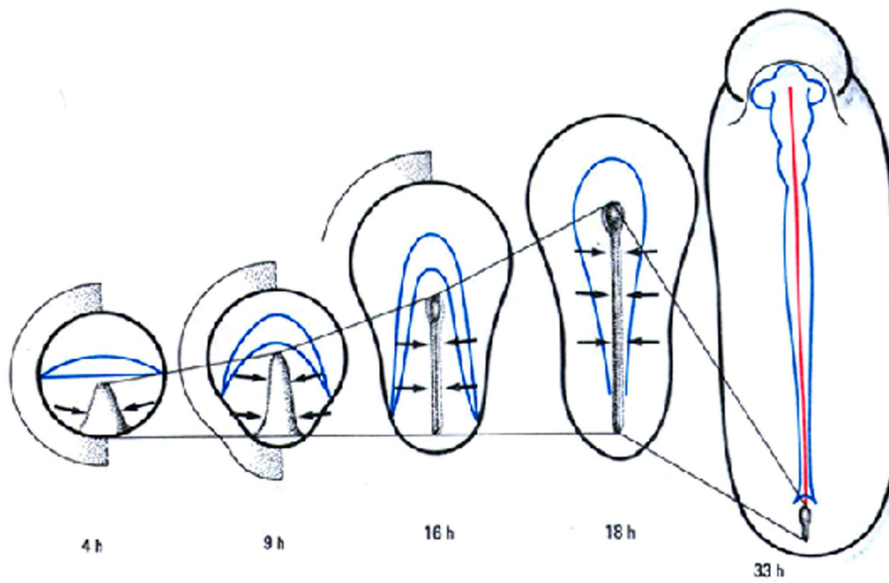


(D) 10-11 jours

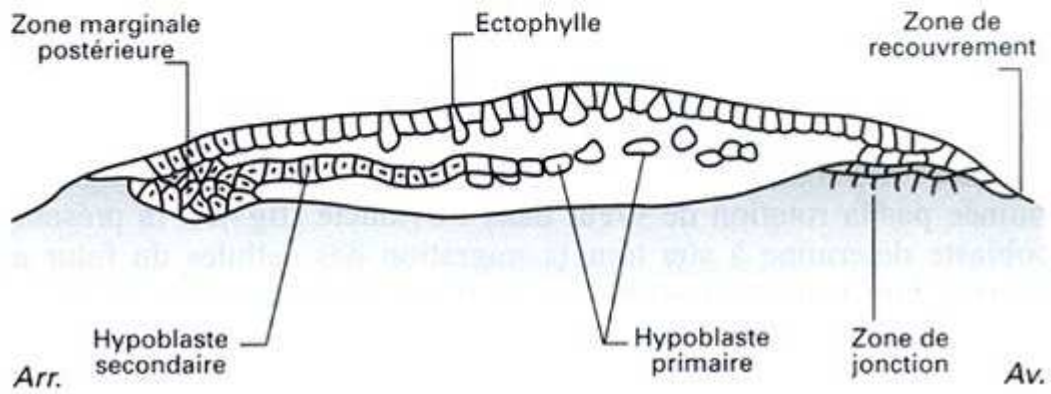
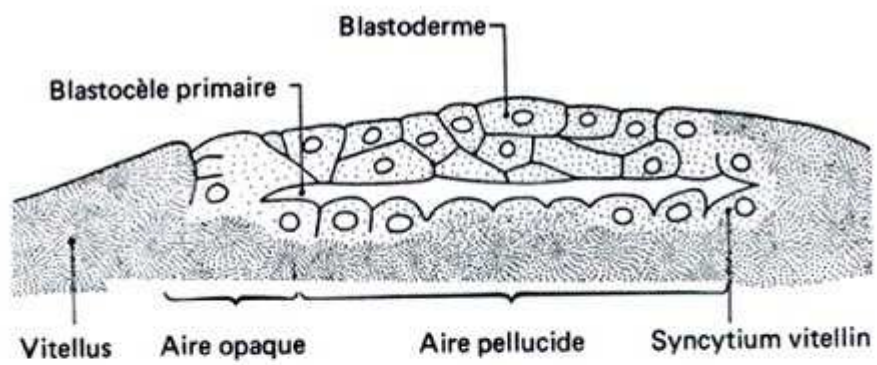


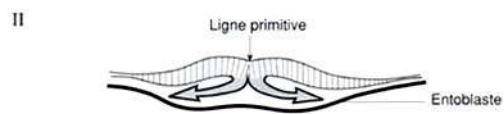
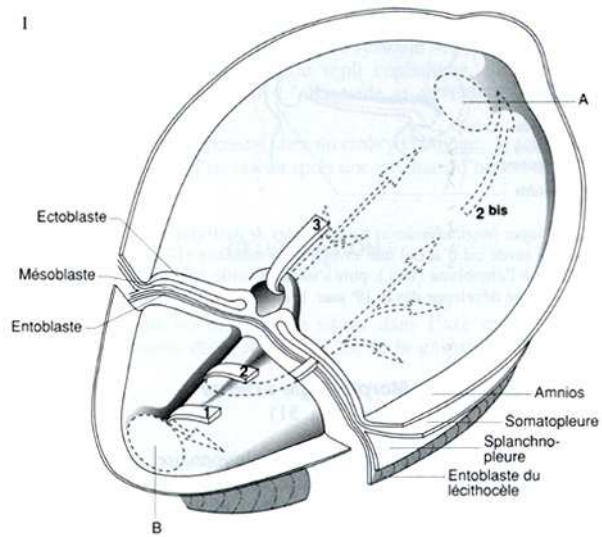
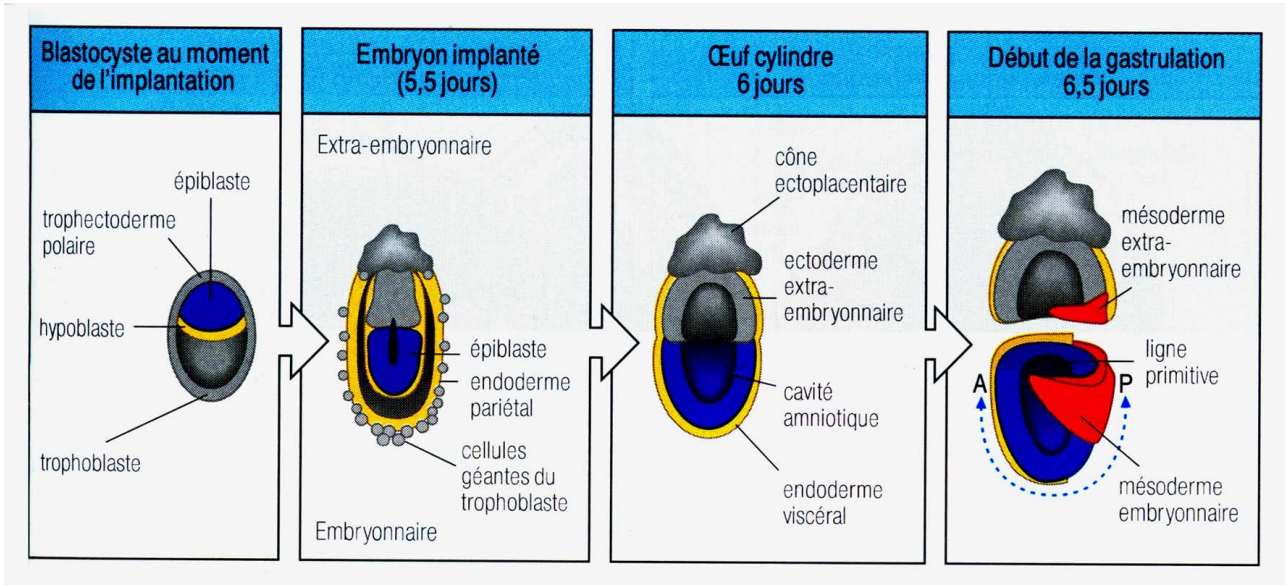


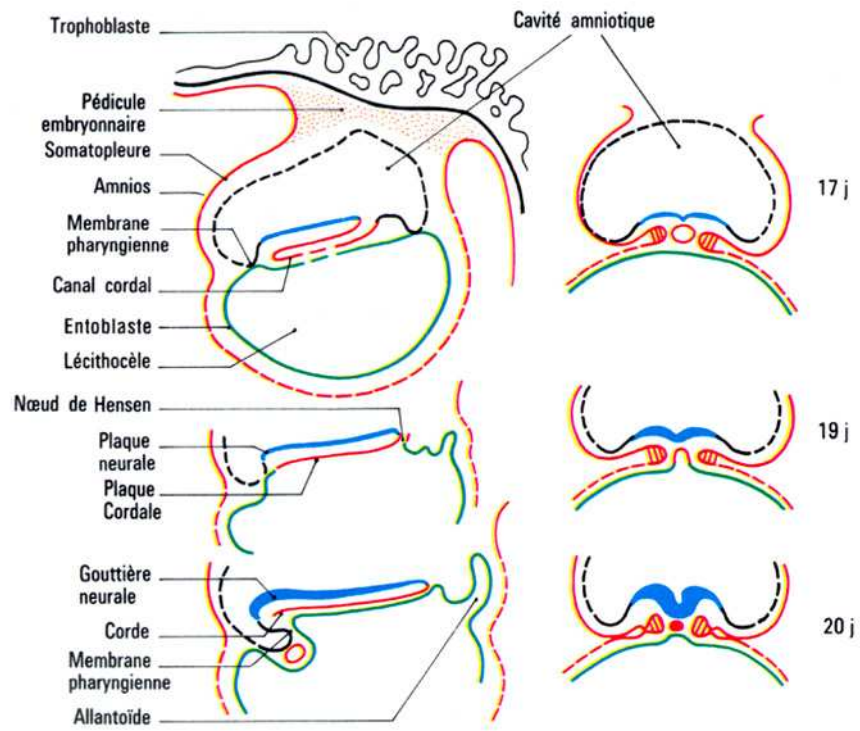
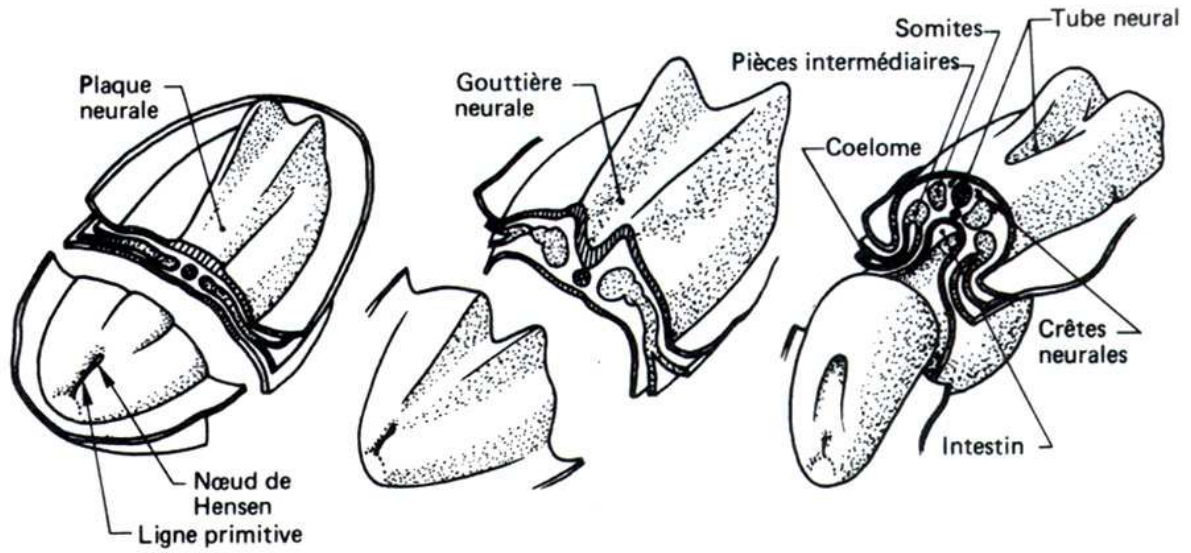
(Gastrulation des Oiseaux)

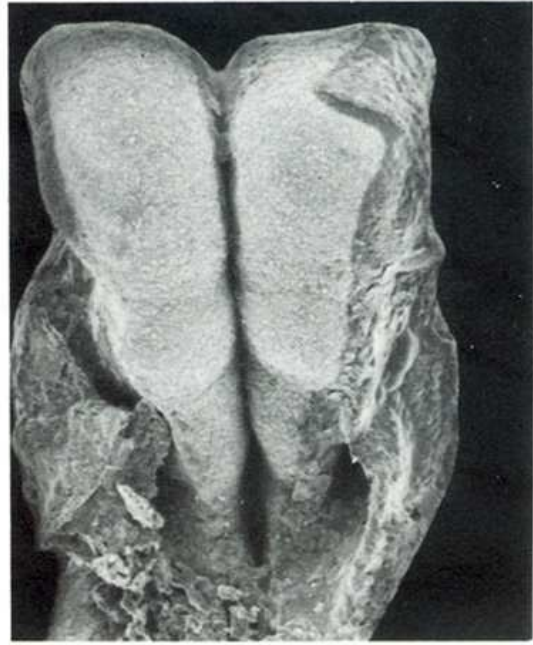


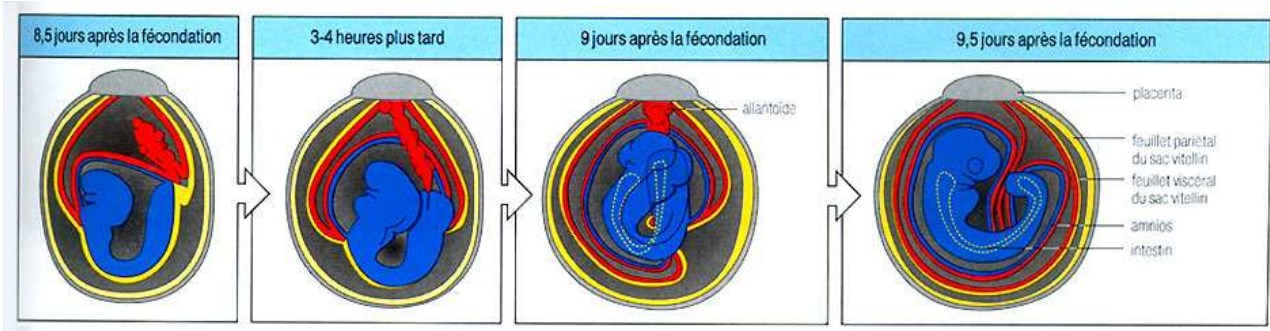
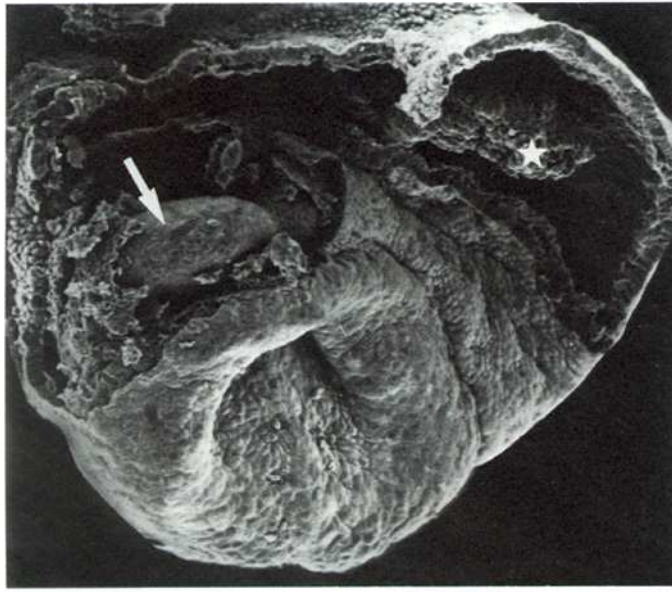
(Oiseaux)

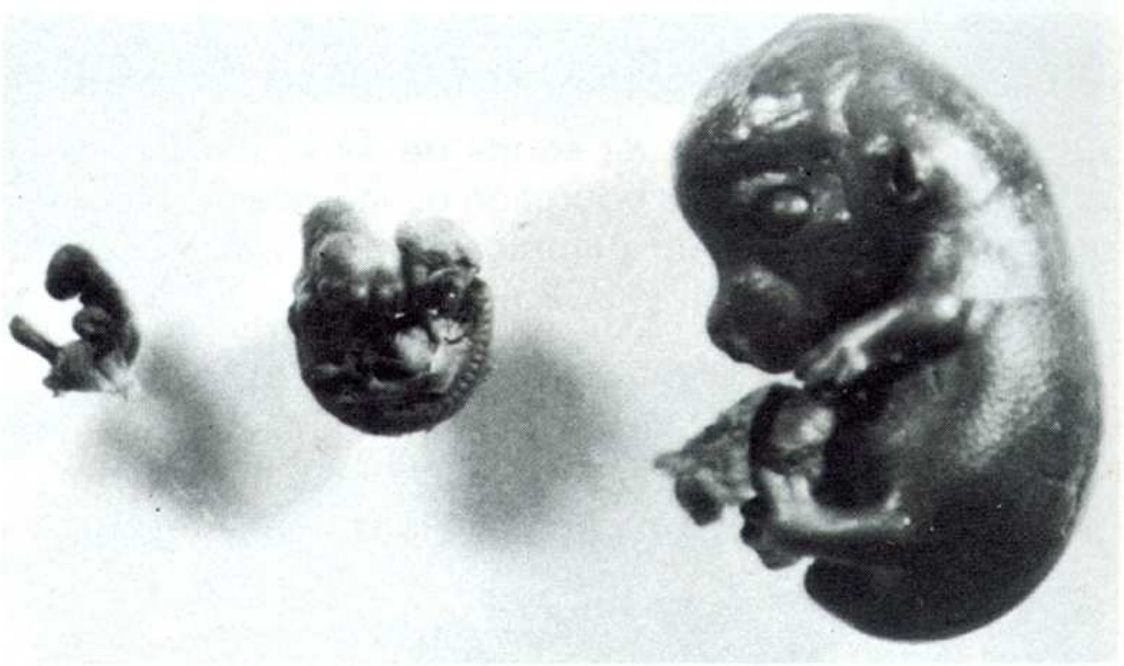
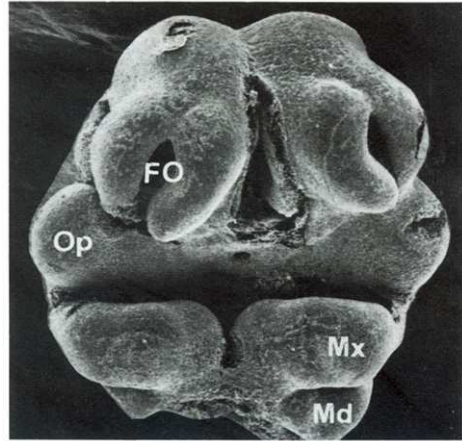
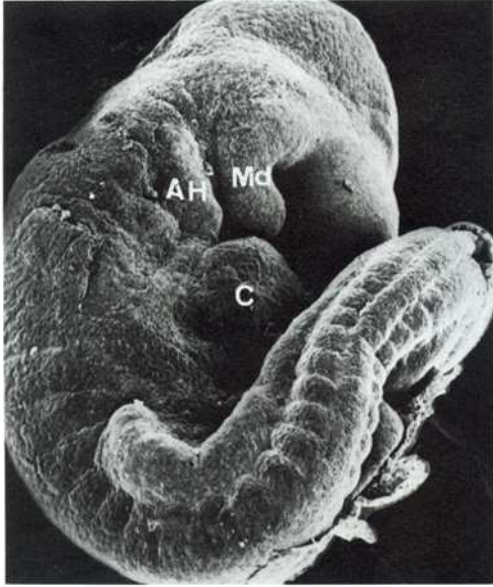


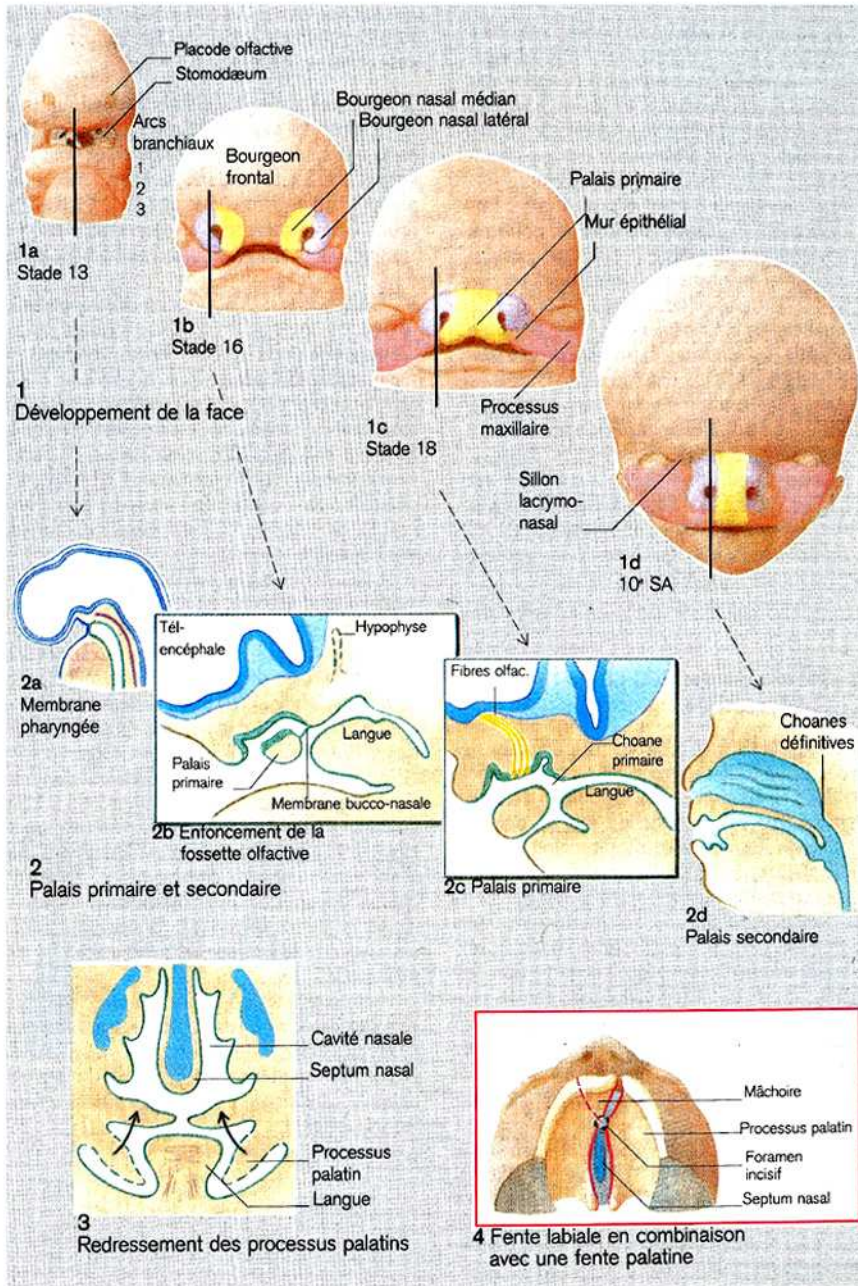


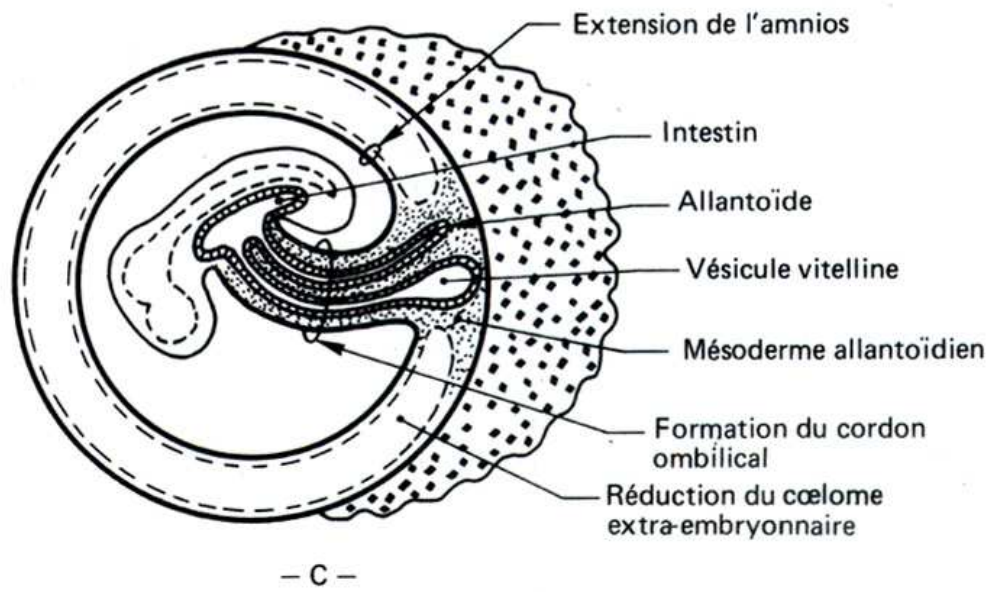
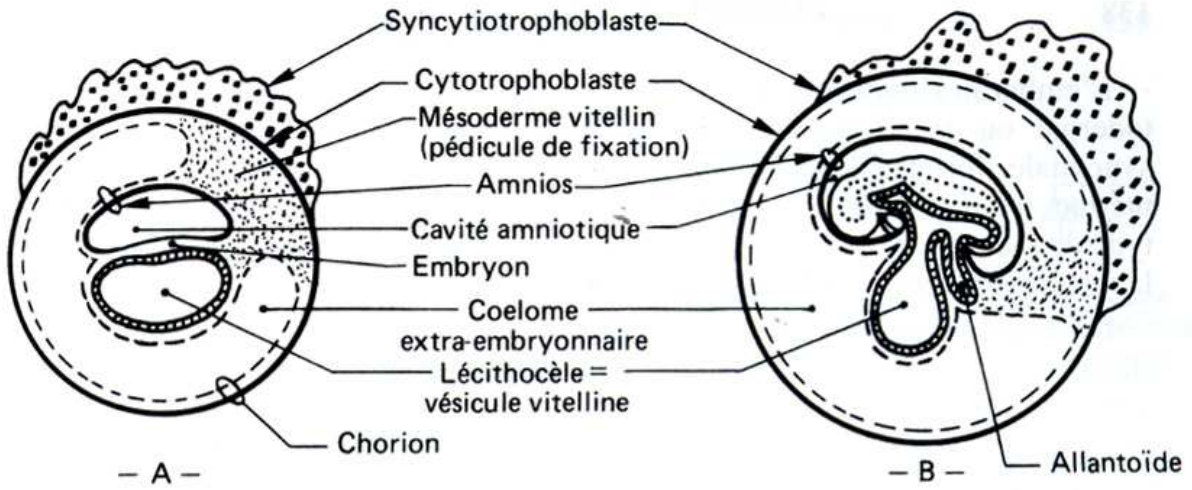


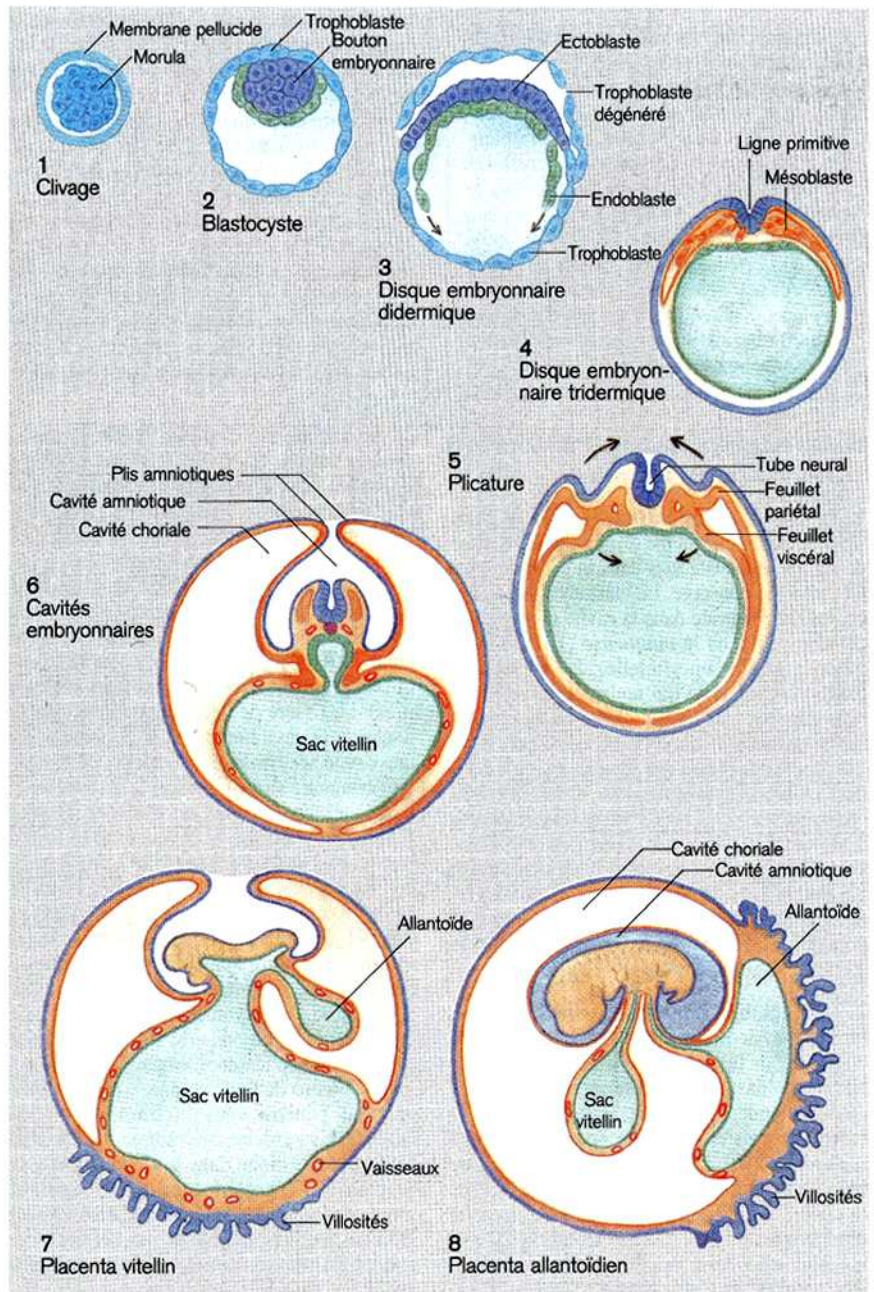






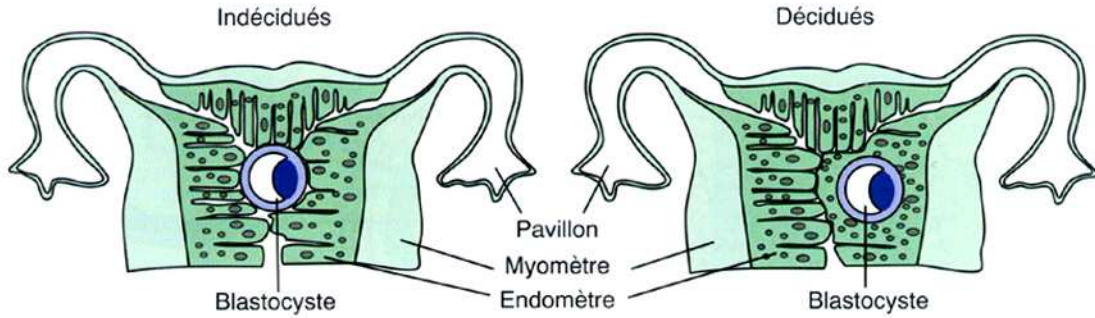




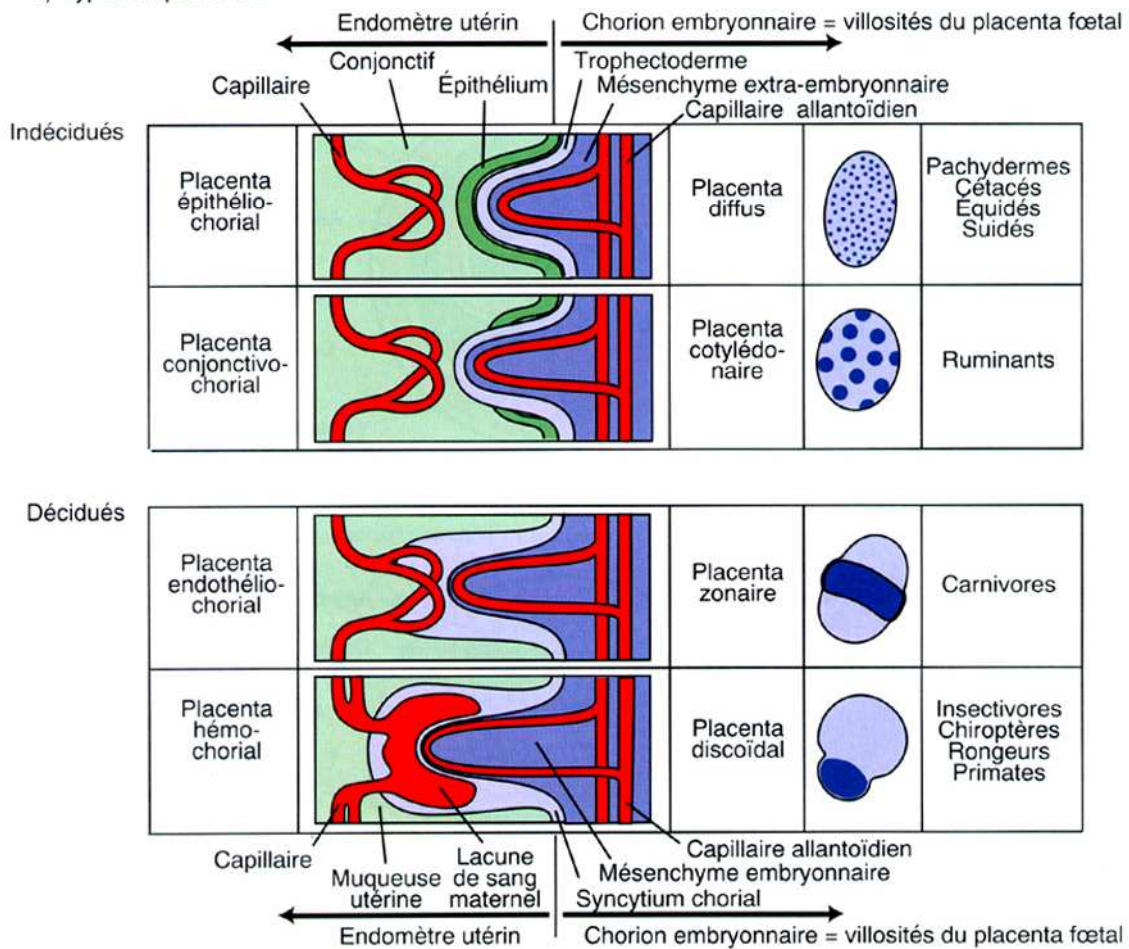


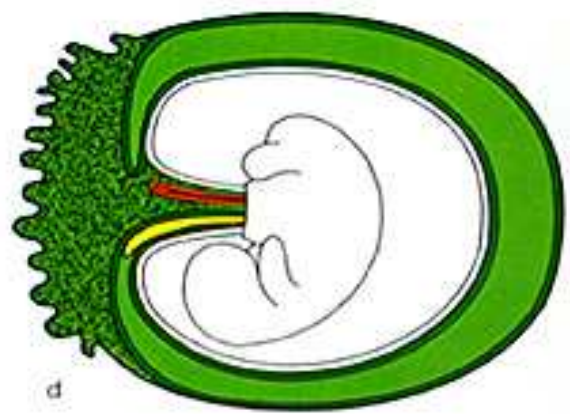
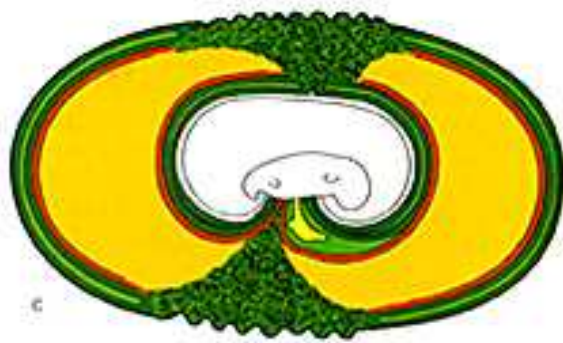
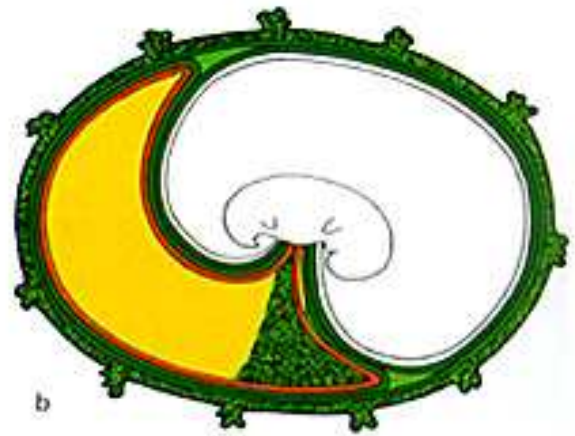
Implantations et types de placentas

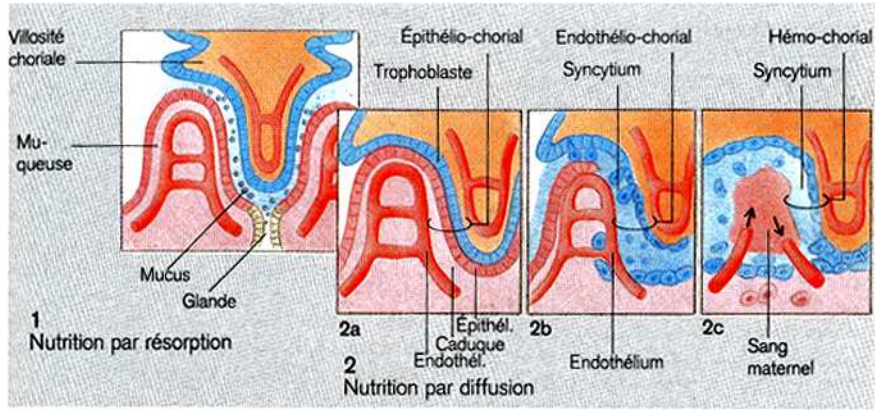
a) Implantations



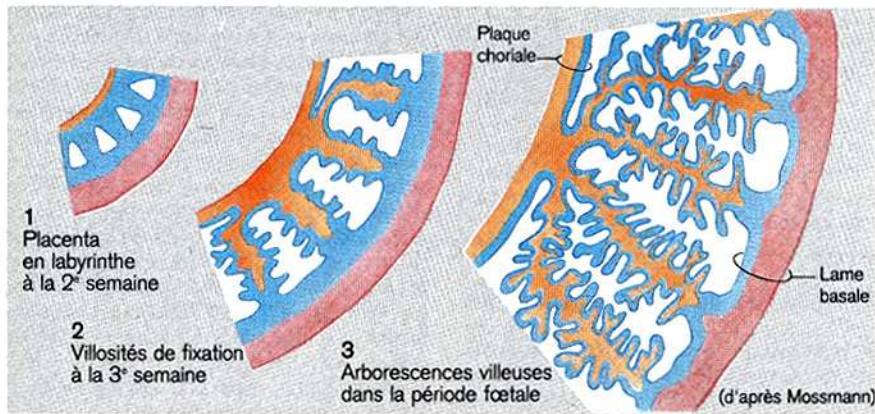
b) Types de placentas



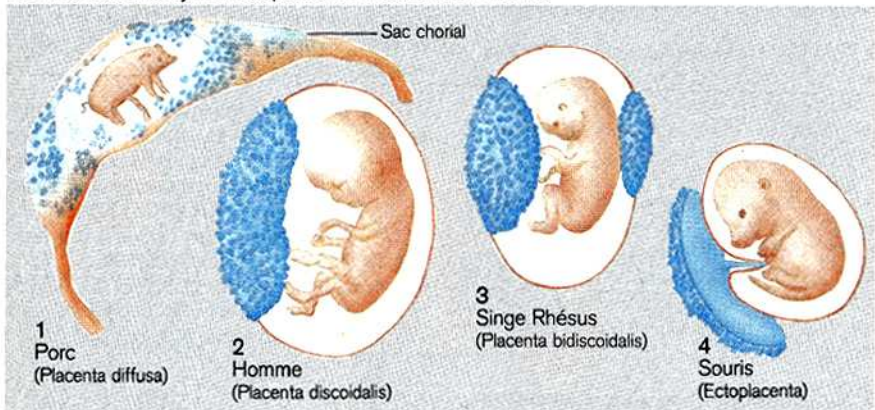




A. Contact entre les villosités chorales et la muqueuse



B. Placenta en labyrinthe et placenta vilieux chez l'Homme



C. Aspect extérieur du placenta

